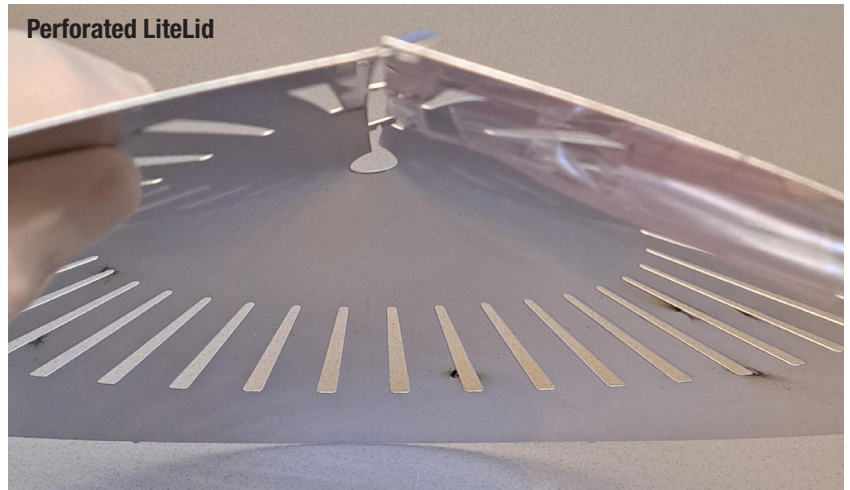


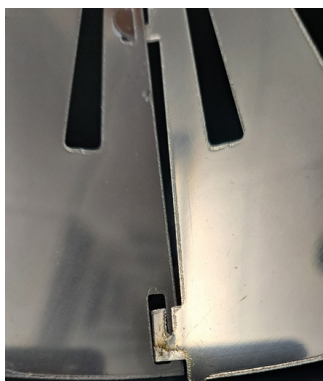
### READ CAREFULLY BEFORE INSTALLING.



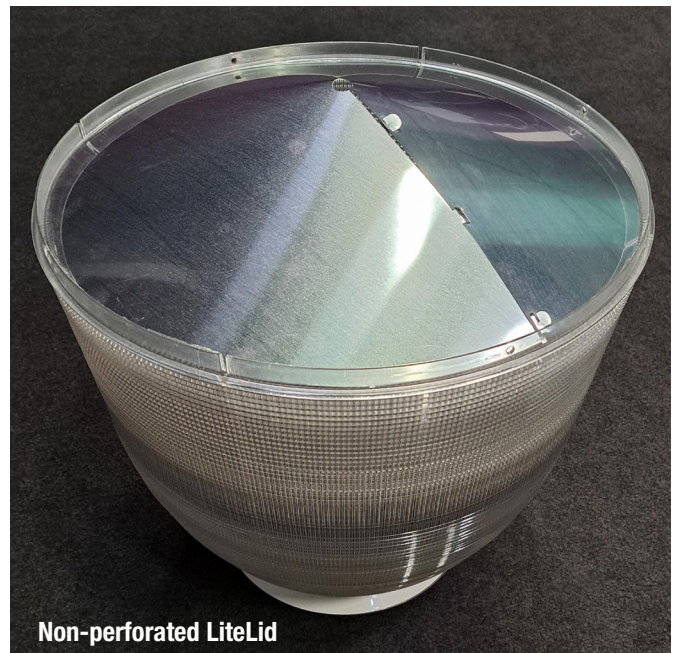
1. Wear gloves when handling and assembling reflectors. Reflectors may have sharp edges.
2. Make sure to have film protected side facing inside the cone when assembled and remove the protective film.



3. To start assembling the LiteLid, place the tab closest to the center of the reflector into its slot.
4. Place the middle tab in its slot, from the opposite side of the reflector.



5. Place the outermost tab in its slot.
6. Bend all tabs to prevent the reflector from opening.



7. Assembled LiteLid placed in lens.

Designed for use with our post top acorn Lindy® and Lineman™ Models. LiteLids should be utilized in light pollution sensitive areas to redirect potentially wasted upward light into increased downward efficiencies.