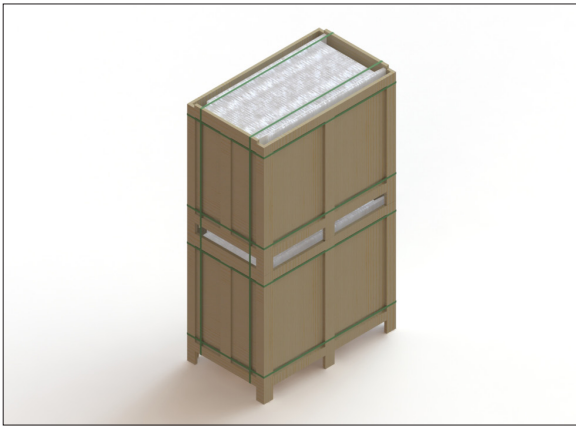


Recommended Handling of A.L.P. Metal Component Pallets



Pallets arrive stacked two high.



Use lifting equipment to safely separate pallets.



Always work on a flat surface to prevent tipping. Wear gloves and personal protective equipment when handling.



To secure the load during handling, use straps, shrink wrap or pallet bands to keep the items from shifting or falling.

Remember:

1. Only stack pallets of the same size together.
2. Set a safe stack height based on pallet weight and stability. The National Fire Prevention Agency also recommends that stacks do not exceed 400 sq ft.
3. Keep aisles clear. Maintain well-marked aisles around pallet stacks so people and equipment can move safely.
4. Keep stacks away from lighting, electrical panels, and ventilation units.