



Specifications

2x2'

Length 23.74"

Width 23.74"

Height 3.07"

H2 4.65"

2x4'

Length 47.71"

Width 23.74"

Height 3.07"

H2 4.65"

Housing

23-gauge steel

Finish

Post painted matte white with minimum 92% reflectivity

General Description

The DIF 552 R is a newly re-launched prismatic troffer kit offered in multiple sizes. It was redesigned to reduce costs and increase its versatility for commercial applications by accommodating both LED tubes and LED modules. Its body features a technical post-painted finish with 92% reflectance to deliver outstanding light distribution, lowering maintenance and extending fixture lifetime.

Features and Benefits

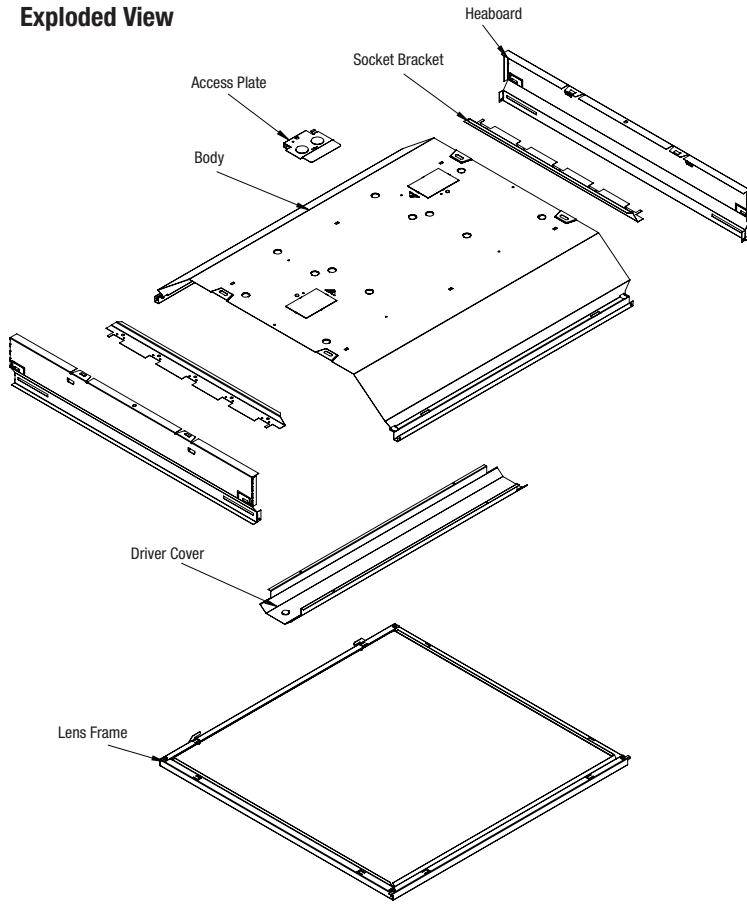
- Recess-mounted installation.
- Accommodates 3 x T8 lamps or LED modules.
- Optional driver box system for driver installation.
- Electrostatically applied polyester powder coat paint in Matte White finish with 92% reflectivity.
- Body is formed and welded in 26-gauge steel (0.45mm).
- Driver box system is 23-gauge steel (0.60mm).
- Custom LED pattern holes available (contact Customer Service).

Applications

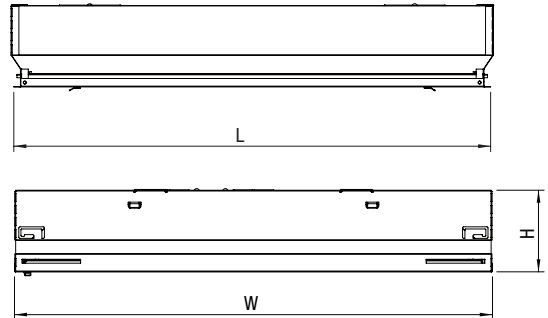
Suitable for interior applications including hospitality, healthcare, education, retail, and office environments.

Please contact A.L.P. for pricing and delivery. A.L.P. will support design and development with customer supplied light engines. All specifications subject to change without notice. A.L.P. Lighting Components, Inc. assumes no responsibility for these materials in any luminaire or application. The product is an OEM component kit requiring final assembly by a qualified OEM fixture manufacturer.

Exploded View



Dimensions



Model	Size	Length	Width	Height	H2
DIF 552 R	2x2	23.74	23.74	3.07	4.65
	2x4	47.71	23.74	3.07	4.65

Please contact A.L.P. for pricing and delivery.
 All specifications subject to change without notice. A.L.P. assumes no responsibility for these materials in any luminaire or application.

DIF 552 ECO R 2x2			DIF 552 ECO R 2x4		
Part Number	Description	Kit Qty	Part Number	Description	Kit Qty
552 2210	Body	1	552 2410	Body	1
510 15	Access Plate	1	510 15	Access Plate	1
552 2231	Headboard	2	552 2231	Headboard	2
552 2211	Socket Cover	2	552 2211	Socket Cover	2
200 2208	Lens Frame	1	200 2408	Lens Frame	1
552 2261	Driver Cover	1	552 2461	Driver Cover	1
200 2296	Right Latch	1	200 2296	Right Latch	1
200 2297	Left Latch	1	200 2297	Left Latch	1