



New! Barricade lens, DC-2S end plug and LPC latches shown.

Description

The Sentry[®] series is A.L.P.'s flagship Gasketed Enclosure. For general purpose and energy-efficient surface or suspended Fluorescent and LED enclosure, suitable for wet, damp, dusty and cold applications. Gear Tray choices of 1 and 2 rows include Tube types (fluorescent and LED) or use of LED linear boards attached to your choice of flat or angled gear trays. Truly a multi-purpose use enclosure for many solutions.

Applications

Ideal for use in dusty, dirty and/or wet environments including food processing, cold storage, kitchens, parking garages, car washes, covered canopies, pedestrian tunnels, concourse, industrial, and horticulture spaces.

For applications where the temperatures may exceed 80° C, A.L.P. recommends the use of stainless steel traylats. (i.e. three lamp/row fixtures)

Certifications

- UL/cUL recognized component
- Wet Location listed
- NSF - ANSI Standard 2
- NEMA4X*
- IP65 and IP66 rated*

**Barricade lens and approved pressure vent required.*

Features

- Rigid one-piece housing construction.
- Two ¼-28 brass studs molded into back of housing for attachment of optional mounting brackets.
- En-seal[™] gasketing provides superior resistance to moisture absorption versus conventional gasketing.
- Lens retained by eight suitcase style latches.
- Molded latch pockets compatible with standard and tamper-proof latches in stainless steel and polycarbonate.
- Gear trays secured to #10-32 brass studs molded into housing via threaded hex steel mounting standoffs.
- Gear tray mounts to #10-32 brass stud molded into housing by two plastics or steel Traylats. for easy, tool-less removal.
- LED Module tray available for one and two rows of nominal 22" LED boards.
- Gear tray suspends from housing by two security straps during servicing.
- 4ft Sentry LED Parking Garage is in Parking Garage Compliance when the Sentry 4ft LED Angled Gear Tray (SENTGT4P38LED) is paired with the Sentry 4ft Parking Garage Reflector (SENTGT4P38REF).

Housing

Compression molded self-extinguishing fiberglass reinforced polyester compound with UL 5VA flame rating (ASTM D635-74) for gear tray types, and UL HB flame rating for strip types. F1 weatherability rating.

Gasketing

En-Seal[™] continuous perimeter poured gasket assures lens seal to housing.

Electrical Chassis

Gear trays constructed of 83% reflective, 22-gauge, pre-painted steel.

Conduit Entry

Standard housings available with one 7/8" conduit entry point on either or both ends. Consult Sales for other opening sizes or for top openings.

Lens

New! IP65 and IP66 4ft Sentry Barricade Lens Injection Molded low profile lens with gasket compression rib for superior sealing. Available in clear acrylic, lumieo[®] acrylic, polycarbonate and frosted polycarbonate.

Inline thermoformed lenses available in tapered, shallow and deep profiles or crepe pattern acrylic, DR reinforced acrylic, frost acrylic, or prismatic polycarbonate.

Mounting

Standard stainless steel mounting brackets (BRKTS22PK) clip to housing for surface or all-thread pendant mounting. Consult sales for chain or cable mounting.

A.L.P. submitted this fixture for wet location testing in the horizontal surface mounted position. Any other operating position should be test verified by the OEM.

Please contact A.L.P. for pricing and delivery.

All specifications subject to change without notice. A.L.P. assumes no responsibility for these materials in any luminaire or application.

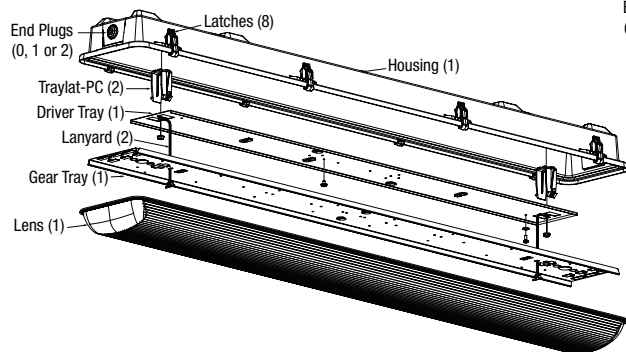
The product is an OEM component kit requiring final assembly by a qualified OEM fixture manufacturer.

Sealant required for wet location use.

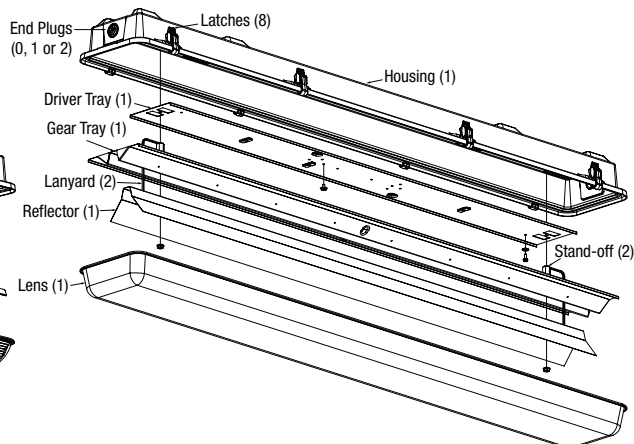
For Nema 4X, IP65 and IP 66 a UL recognized component (NITW2) breather vent rated Type 4X is required

EXPLODED VIEWS

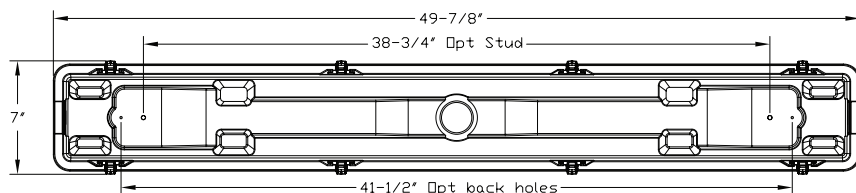
4ft Sentry LED or Fluorescent (Gear Tray Type)



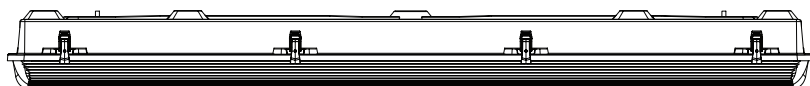
4ft Sentry LED Parking Garage



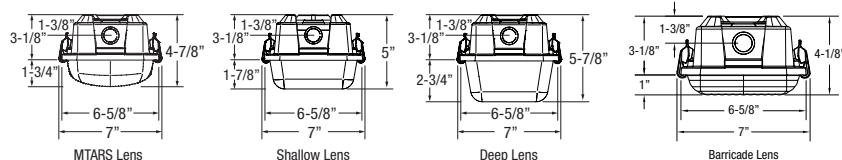
TOP VIEW



SIDE VIEW



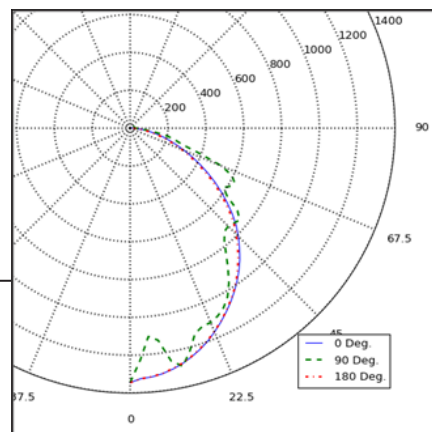
END VIEW



Fixture Performance for Reference Only

(See photometry)

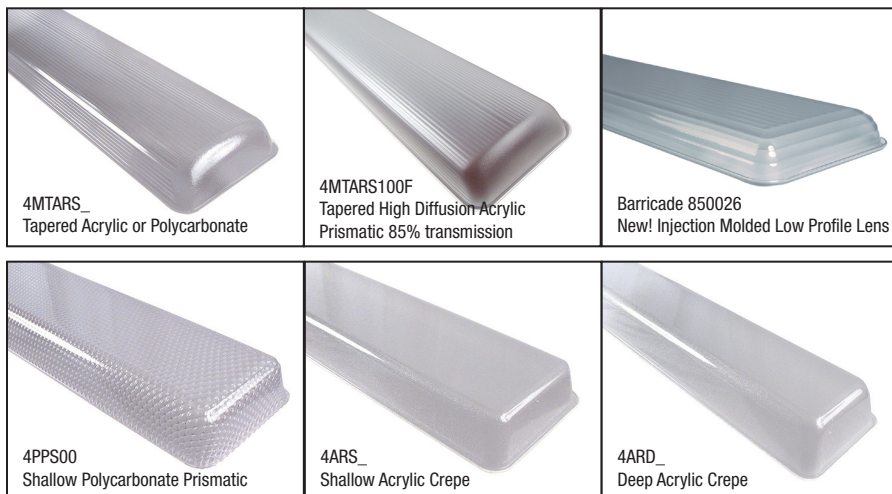
Sentry 4' with A/C Barricade Lens	
Specification	4' Sentry
Input Wattage	28.241
Delivered Lumens (lms)	3527.18
Efficacy (LpW)	125.077
Voltage (V)	120-277v
Operating Frequency (Hz)	50/60



Notice

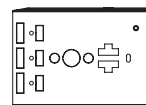
A.L.P. assumes no responsibility for suitability of these materials in any luminaire or application. Please test for fit and function prior to ordering project quantities.

While A.L.P. utilizes IESNA testing procedures and believes our testing results to be accurate, A.L.P. provides photometry for reference only. Actual results will vary based on the actual light source(s) and power source(s) used, i.e. ballast, driver, generator, etc. and the combinations in which they are used, as well as operating temperatures, and other electrical and environmental variables. We urge that customers perform their own fixture qualifications prior to making performance-based claims. In no event will A.L.P. be liable for any loss or damage, including without limitation, indirect or consequential loss or damage in connection with the use of this information.



HOUSING (Select One)		
Part Number	Description (Requires 8 latches per housing)	Qty/Case
4F-28-GT	4ft LED & Fluorescent Gear Tray Type 5VA Housing (2 end holes) (requires 8 latches)	30
LENS (Select one)		
Part Number	Description	Qty/Case
850026	NEW! 4ft Barricade Lens AC-FC (Clear Acrylic)	30
850028	NEW! 4ft Barricade Lens LUM (Lumieo Acrylic)	30
850027	NEW! 4ft Barricade Lens PC (Clear Polycarbonate)	30
850029	NEW! 4ft Barricade Lens Frosted Polycarbonate	30
4MTARS100F	4ft Tapered Lens, AC 100% FROST	30
4MTARSHI	4ft Tapered Lens, AC/HI-IMPACT	30
4MTARSMI	4ft Tapered Lens, AC/MED IMPACT	30
4ARS00	4ft Shallow Lens, AC/HI-IMPACT	30
4ARS15	4ft Shallow Lens, AC/MED-IMPACT, Crepe Pattern	30
4PPS00	4ft Shallow Lens, PC Clear Prismatic	30
4ARD15	4ft Deep Lens, AC/MED-IMPACT, Crepe Pattern	30
GEAR TRAY (Select one)		
Part Number	Description	Qty/Case
SENTRYGT4U	4ft Fluorescent and LED Tube Flat Gear Tray, 2 Row	250
SENTGT4-LED-2B	4ft LED Flat Gear Tray, 1 Row (To customize, submit gear tray blank dwg/model w/ details)	250
SENTGT4-LED-4B	4ft LED Flat Gear Tray, 2 Row (To customize, submit gear tray blank dwg/model w/ details)	250
SENTGT4P38LED	4ft LED Angled LED, Parking Garage, 2 Row (To customize, submit gear tray blank dwg/model w/ details)	15
CENTER REFLECTOR (Select one)		
Part Number	Description	Qty/Case
SENTGT4P38REF	4FT LED Parking Garage Reflector (to achieve Parking Garage compliance, use SENTGT4P38LED & SENTGT4P38REF together)	40
DRIVER TRAY (Select one)		
Part Number	Description	Qty/Case
SENTGT4-LED-B	4FT LED Driver Tray - 2 Row	75
SENTGT4-LED-BL	4FT LED Driver Tray - 1 Row	NA
LATCHES (Select one)		
Part Number	Description (Requires 8 latches per housing)	Qty/Case
LPC	White polycarbonate latch	1000
LPCTP3	Tamper-proof white polycarbonate latch with nut and screw	1000
LSS-3	Stainless steel latch	1000
LSS-3TP	Tamper-proof stainless steel latch with nut and screw	1000
WIRE ENTRY PLUGS (Select none, one or two depending on housing selected)		
Part Number	Description	Qty/Case
FEPW	White 7/8" dry location plug	5000
LTP088*	White 7/8" liquid tight plug	1000
DC-2S*	7/8" die cast aluminum fitting assembly for 1/2" rigid conduit	200
HOUSING MOUNTING BRACKET (Select one)		
Part Number	Description	Qty/Case
BRKTS22PK	Sentry stainless steel strap bracket, 2-pack	80
MISCELLANEOUS PARTS		
Part Number	Description	Qty/Case
TRAYLAT-PC	White polycarbonate gear tray mounting clip (NUT1001 Required)	1000
TRAYLATSS**	Stainless steel gear tray mounting clip (NUT1001 Required)	1000
NUT1001	#10-32x3/8" steel hex locking nut for TRAYLAT attachment to housing	5000
10-32MFSTANDOFF	Threaded hex steel mounting standoff for 1-row LED module gear tray	NA
LANYARD	White nylon security strap	1000
OPTIONAL ACCESSORIES		
Part Number	Description	
TAMPER BIT 3	Driver bit for TAMPERPRUF screw used in LPCTP3 & LSS-3TP	
TAMPER BIT 8	Driver bit for tamper-proof snake eye drive screw, compatible with LSS-3	

GEAR TRAYS



SENTRYGT4U-LED



SENTGT4-LED-B

LATCHES



LPC



LPCTP3



LSS-3



LSS-3TP

WIRE ENTRY PLUGS



FEPW

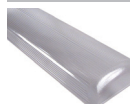


LTP088*

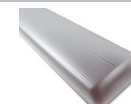


DC-2S*

LENSES



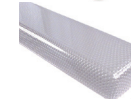
4MTARS_



4MTARS100F



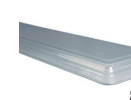
4ARS_



4PPS00



4ARD15



850026

HOUSING MOUNTING BRACKETS



BRKTS22PK

MISCELLANEOUS PARTS



TRAYLATSS**



TRAYLAT-PC



LANYARD

OPTIONAL ACCESSORIES



TAMPER BIT 8



TAMPER BIT 3

*Sealant required for wet location use.

**A.L.P. recommends using TRAYLATSS for three lamp fixtures.

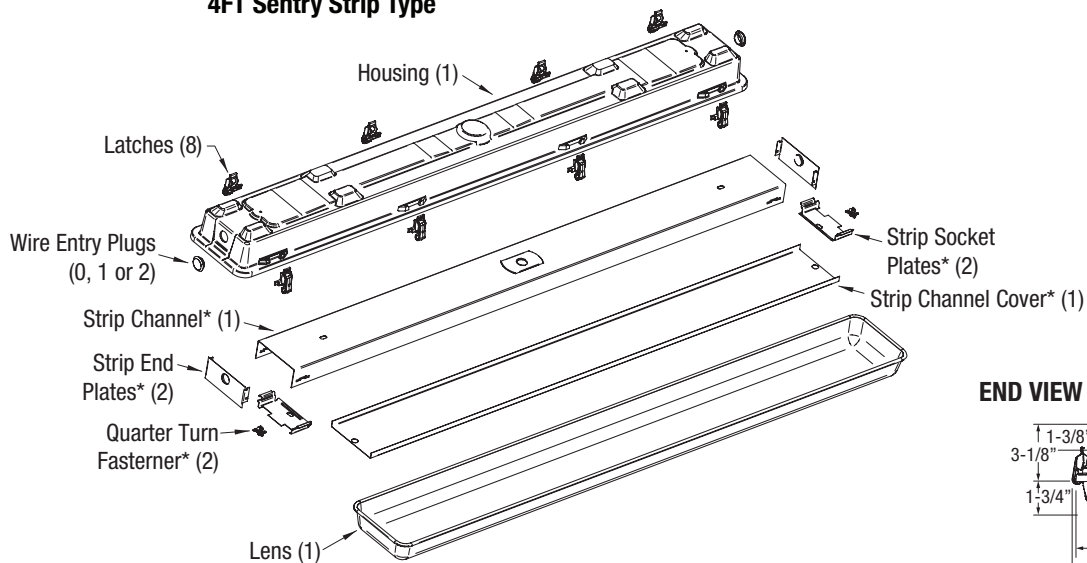
KITS		
Kit Number	Description	Qty/Case
F240-2	Sentry 4ft strip type kit (without gear tray)	1
Kit Includes		
4F-28	4' Sentry HB Housing 7/8" hole on both ends	1
4ARS15	4ft Sentry AC/Shallow/CR/85-15	1
FEPW	Flush white end plugs	2
LPC	White polycarbonate latch	8

KITS		
Kit Number	Description	Qty/Case
F240-2-GT	Sentry 4ft gear tray kit (with tube type gear tray)	1
Kit Includes		
4F-28-GT	4FT 5VA SENTRY HSG 2HOLES	1
4MTARSMI	4' Sentry MTARS 85/15 ACR	1
SENTRYGT4U	Sentry 4ft gear tray universal T5 T8 and T12	1
FEPW	Flush white end plugs	2
LPC	White polycarbonate latch	8
LANYARD	White nylon security strap	2
TRAYLAT-PC	White polycarbonate gear tray mounting clip	2

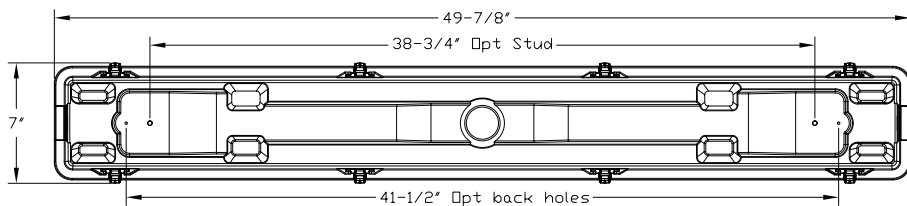
ASSEMBLY		
Part Number	Description	Qty/Case
TBD	Custom quote only customer must supply boards and drivers	1

EXPLODED VIEW

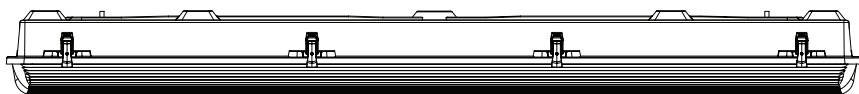
4FT Sentry Strip Type



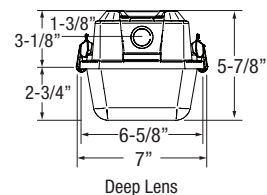
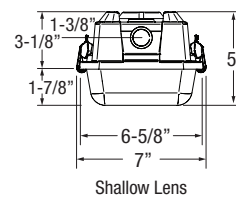
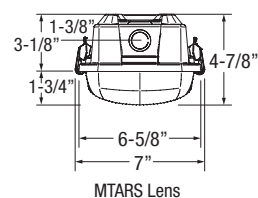
TOP VIEW



SIDE VIEW



END VIEW



HOUSING (Select One) Contact Sales to order housing with top holes, 1-1/8" or 1-1/4" holes, or back studs.		
Part Number	Description (Requires 8 latches per housing)	Qty/Case
4F-28	4' Sentry HB Housing 7/8" hole on both ends	30
OPTIONAL STRIP HOUSING COMPONENTS		
Part Number	Description	Qty/Case
SEP240B	4' Striplight channel (Select One) †	500
SEP240C-VP	4' Striplight T8 channel cover (Select One) †	500
SEP240C-T5	4' Striplight T5 channel cover (Select One)	500
SEP140SP	1-Lamp T8 socket plate (Select Two)	500
SEP240SP	2-Lamp T8 socket plate (Select Two) †	500
SEP340SP	3-Lamp T8 socket plate (Select Two)	500
SESP1L4T5	1-Lamp T5/T5HO socket plate for 2' channel (Select Two)	250
SESP2L4T5	2-Lamp T5/T5HO socket plate for 2' channel (Select Two)	250
SESP3L4T5	3-Lamp T5/T5HO socket plate for 2' channel (Select Two)	250
SEPE	Striplight end plates (Select Two) †	500
RQTF	¼-Turn fastener for striplight channel cover (Select Two) †	2500
SEP240-VP	4' 2-Lamp T8 Striplight channel kit. Contains items marked with "†"	n/a

For All Other Options Please Refer to Page 3

Note: Strip housing components are purchased through A.L.P. Steel craft.