



2MTARS lens, FEPW End Plug, and LPC latches shown.

Description

The Sentry[®] series is A.L.P.'s flagship Gasketed Enclosure. For general purpose and energy-efficient surface or suspended Fluorescent and LED enclosure, suitable for wet, damp, dusty and cold applications. Gear Tray choices of 1 and 2 rows include Tube types (fluorescent and LED) or use of LED linear boards attached to your choice of flat or angled gear trays. Truly a multi-purpose use enclosure for many solutions.

Applications

Ideal for use in dusty, dirty and/or wet environments including food processing, cold storage, kitchens, parking garages, car washes, covered canopies, pedestrian tunnels, concourse, industrial, and horticulture spaces.

For applications where the temperatures may exceed 80° C, A.L.P. recommends the use of stainless steel traylats. (i.e. three lamp/row fixtures)

Certifications

- UL/cUL recognized component
- Wet Location listed
- NSF - ANSI Standard 2

Features

- Rigid one-piece housing construction.
- Two ¼-28 brass studs molded into back of housing for attachment of optional mounting brackets.
- En-seal[™] gasketing provides superior resistance to moisture absorption versus conventional gasketing.
- Lens retained by four suitcase style latches.
- Molded latch pockets compatible with standard and tamper-proof latches in stainless steel and polycarbonate.
- Gear trays secured to #10-32 brass studs molded into housing via threaded hex steel mounting standoffs.
- Gear tray mounts to #10-32 brass stud molded into housing by two plastics or steel Traylats. for easy, tool-less removal.
- LED Module tray available for one and two rows of nominal 22" LED boards.
- Gear tray suspends from housing by two security straps during servicing.
- 2ft Sentry LED Parking Garage is in Parking Garage Compliance when the Sentry 2ft LED Angled Gear Tray (SENTGT2P38LED) is paired with the Sentry 2ft Parking Garage Reflector (SENTGT2P38REF).

Housing

Compression molded self-extinguishing fiberglass reinforced polyester compound with UL 5VA flame rating (ASTM D635-74) for gear tray types, and UL HB flame rating for strip types. F1 weatherability rating.

Gasketing

En-Seal[™] continuous perimeter poured gasket assures lens seal to housing.

Electrical Chassis

Gear Trays constructed of high reflective, 22-gauge, pre-painted steel.

Conduit Entry

Standard housings available with one 7/8" conduit entry point on either or both ends. Consult Sales for other opening sizes or for top openings.

Lens

Thermoformed lenses available in tapered or shallow profile in crepe pattern clear acrylic or frost acrylic.

Mounting

Standard stainless steel mounting brackets (BRKTS22PK) clip to housing for surface or all-thread pendant mounting. Consult sales for chain or cable mounting.

A.L.P. submitted this fixture for wet location testing in the horizontal surface mounted position. Any other operating position should be test verified by the OEM.

Please contact A.L.P. for pricing and delivery.

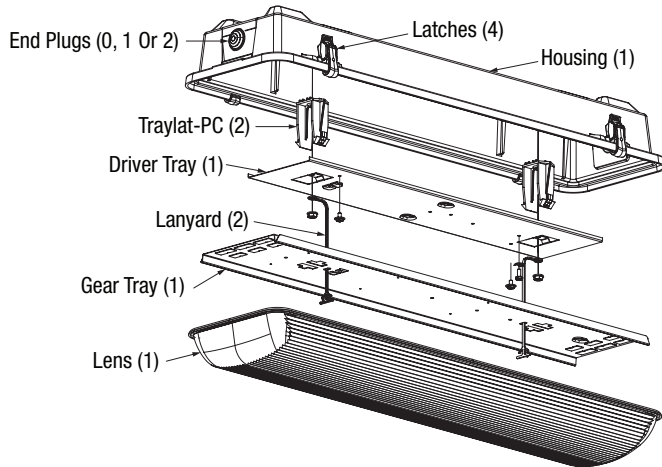
All specifications subject to change without notice. A.L.P. assumes no responsibility for these materials in any luminaire or application.

The product is an OEM component kit requiring final assembly by a qualified OEM fixture manufacturer.

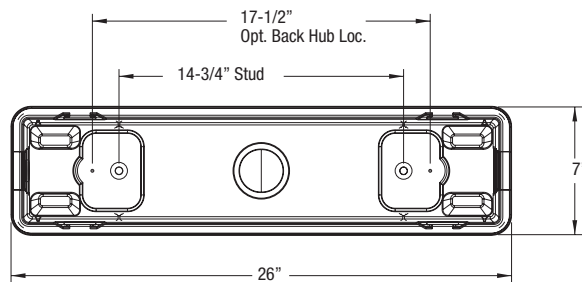
Sealant required for wet location use.

EXPLODED VIEWS

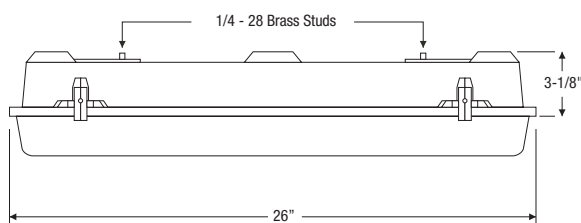
2FT Sentry LED or Fluorescent (Gear Tray Type)



TOP VIEW

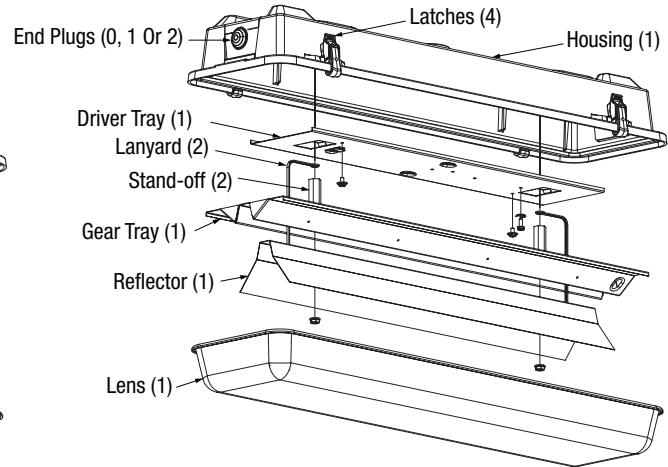


SIDE VIEW

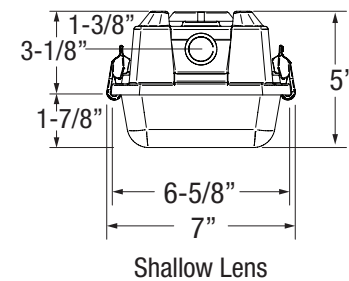
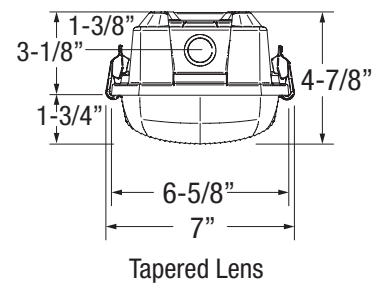


Note: Brass Studs on Inside of Unit are 10-32

2FT Sentry LED Parking Garage



END VIEWS



HOUSING (Select one)		
Part Number	Description (Requires 4 latches per housing)	Qty/Case
2F-2-GTBS	2ft LED & Fluorescent Gear Tray Type 5VA Housing (2 end holes)	30
LENS (Select one)		
Part Number	Description	Qty/Case
2MTARS100F	2ft Tapered Lens, Acrylic 100% FROST	30
2MTARSMI	2FT Tapered Lens, Acrylic/MED-IMPACT	30
2ARS00	2ft Shallow Lens, Acrylic/HI-IMPACT, Crepe pattern	30
2ARS15	2ft Shallow Lens, Acrylic/MED-IMPACT, Crepe pattern	30
GEAR TRAY (Select one)		
Part Number	Description	Qty/Case
SENTRYGT2U	2ft Fluorescent and LED Tube Flat Gear Tray, 2 Row	30
SENTRYGT2U-LED	2ft LED Flat Gear Tray, 2 Row (To customize, submit gear tray blank dwg/model w/ details)	30
SENTGT2P38LED	2ft LED Angled LED, Parking Garage, 2 Row (To customize, submit gear tray blank dwg/ model w/ details)	30
CENTER REFLECTOR (Select one)		
Part Number	Description	Qty/Case
SENTGT2P38REF	2ft LED Parking Garage Reflector (to achieve Parking Garage compliance, use SENTGT2P38LED & SENTGT2P38REF together)	80
DRIVER TRAY (Select one)		
Part Number	Description	Qty/Case
SENTGT2-LED-B	2ft LED Driver Tray - 2 Row	125
LATCHES (Select one)		
Part Number	Description (Requires 4 latches per housing)	Qty/Case
LPC	White polycarbonate latch	1000
LPCTP3	Tamper-proof white polycarbonate latch with nut and screw	1000
LSS-3	Stainless steel latch	1000
LSS-3TP	Tamper-proof stainless steel latch with nut and screw	1000
WIRE ENTRY PLUGS (Select none, one or two depending on housing selected)		
Part Number	Description	Qty/Case
FEPW	White 7/8" dry location plug	5000
LTP088*	White 7/8" liquid tight plug	1000
DC-2S*	7/8" die cast aluminum fitting assembly for 1/2" rigid conduit	200
HOUSING MOUNTING BRACKET (Select one)		
Part Number	Description	Qty/Case
BRKTS22PK	Sentry stainless steel strap bracket, 2-pack	80
MISCELLANEOUS PARTS		
Part Number	Description	Qty/Case
TRAYLAT-PC	White polycarbonate gear tray mounting clip (NUT1001 Required)	1000
TRAYLATSS**	Stainless steel gear tray mounting clip (NUT1001 Required)	1000
NUT1001	#10-32x3/8" steel hex locking nut for TRAYLAT attachment to housing	5000
10-32MFSTANDOFF	Threaded hex steel mounting standoff for 1-row LED module gear tray	NA
LANYARD	White nylon security strap	1000
OPTIONAL ACCESSORIES		
Part Number	Description	Qty/Case
TAMPER BIT 3	Driver bit for TAMPERPRUF screw used in LPCTP3 & LSS-3TP	
TAMPER BIT 8	Driver bit for tamper-proof snake eye drive screw, compatible with LSS-3	

*Sealant required for wet location use.

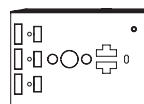
**A.L.P. recommends using TRAYLATSS for three lamp fixtures.

KITS		
Kit Number	Description	Qty/Case
F220-2	Sentry 2ft strip type kit (without gear tray)	1
Kit Includes		Qty/Kit
2F-2	2ft Sentry housing two holes	1
2ARS15	2FT Sentry AC/Shallow/CR/85-15	1
FEPW	Flush white end plugs	2
LPC	White polycarbonate latch	4

KITS		
Kit Number	Description	Qty/Case
F220-2-GT	Sentry 2ft gear tray kit (with tube type gear tray)	1
Kit Includes		Qty/Kit
2F-2-GTBS	2FT5VSENTRY HSG 2HOLES	1
2ARS15	2ft Sentry AC/Shallow/CR/85-15	1
SENTRYGT2U	Sentry 2ft gear tray universal T5 T8 and T1	1
FEPW	Flush white end plugs	2
LPC	White polycarbonate latch	4
LANYARD	White nylon security strap - gear tray	2
TRAYLAT-PC	Gear tray universal plastic clip	2

ASSEMBLY		
Part Number	Description	Qty/Case
TBD	Custom quote only customer must supply boards and drivers	1

GEAR TRAYS



SENTRYGT2U



SENTRYGT2U-LED

LATCHES



LPC



LPCTP3



LSS-3



LSS-3TP

WIRE ENTRY PLUGS



FEPW

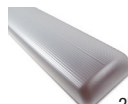


LTP088*

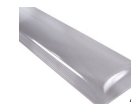


DC-2S*

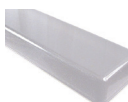
LENSES



2MTARS100F

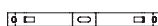


2MTARSMI



2ARS15/2ARS00

HOUSING MOUNTING BRACKETS



BRKTS22PK

MISCELLANEOUS PARTS



TRAYLATSS**

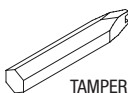


TRAYLAT-PC



LANYARD

OPTIONAL ACCESSORIES



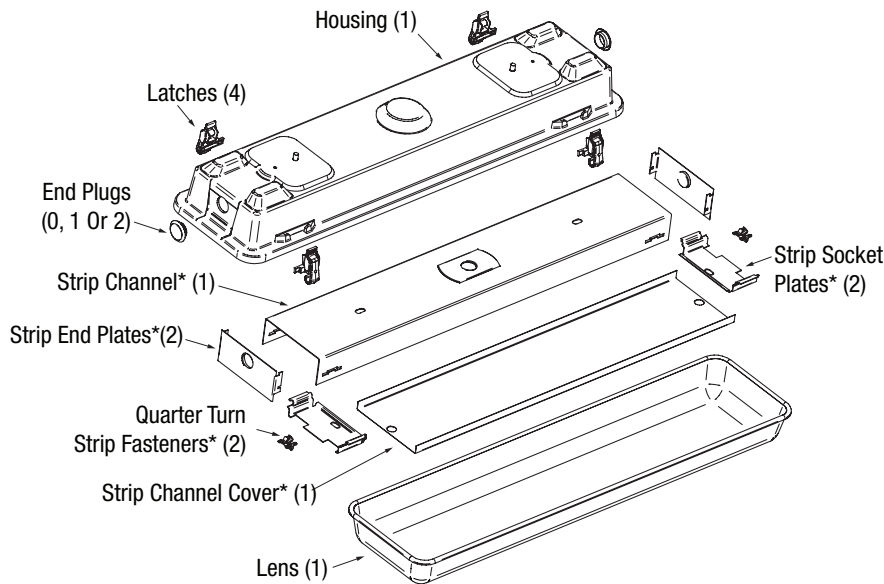
TAMPER BIT 8



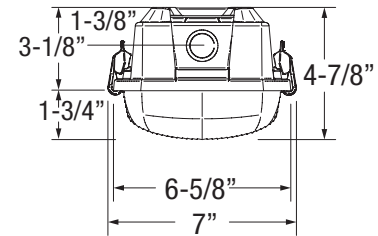
TAMPER BIT 3

EXPLODED VIEW

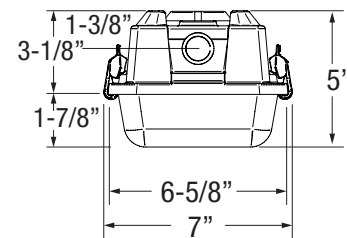
2FT Sentry Strip Type



END VIEWS

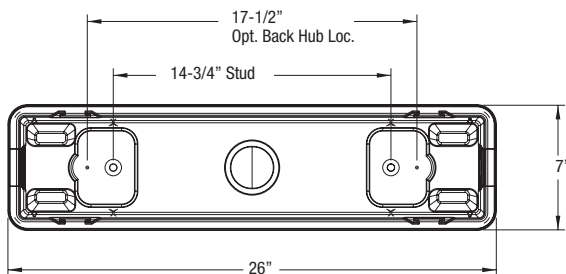


Tapered Lens

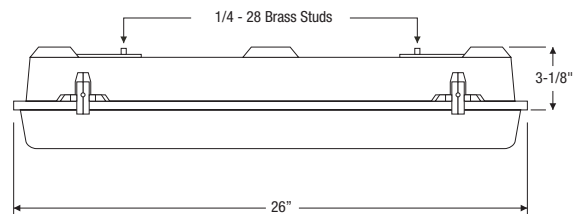


Shallow Lens

TOP VIEW



SIDE VIEW



Note: Brass Studs on Inside of Unit are 10-32

HOUSING (Select One) Contact Sales to order housing with top holes, 1-1/8" or 1-1/4" holes		
Part Number	Description (Requires 4 latches per housing)	Qty/Case
2F-0	2' Sentry HB Housing None	30
2F-2	2' Sentry HB Housing 7/8" hole on both ends	30
OPTIONAL STRIP HOUSING COMPONENTS		
Part Number	Description	Qty/Case
SEP220B	2' Striplight channel (Select One) †	1000
SEP220C-VP	2' Striplight T8 channel cover (Select One) †	1000
SEP220C-T5	2' Striplight T5 channel cover (Select One)	1000
SEP140SP	1-Lamp T8 socket plate (Select Two)	500
SEP240SP	2-Lamp T8 socket plate (Select Two) †	500
SEP340SP	3-Lamp T8 socket plate (Select Two)	500
SESP1L2T5	1-Lamp T5/T5HO socket plate for 2' channel (Select Two)	250
SESP2L2T5	2-Lamp T5/T5HO socket plate for 2' channel (Select Two)	250
SESP3L2T5	3-Lamp T5/T5HO socket plate for 2' channel (Select Two)	250
SEPE	Striplight end plates (Select Two) †	250
RQTF	¼-Turn fastener for striplight channel cover (Select Two) †	500
SEP220-VP	2' 2-Lamp T8 Striplight channel kit. Contains items marked with "†"	n/a

For All Other Options Please Refer to Page 3

Note: Strip housing components are purchased through A.L.P. Steel craft.