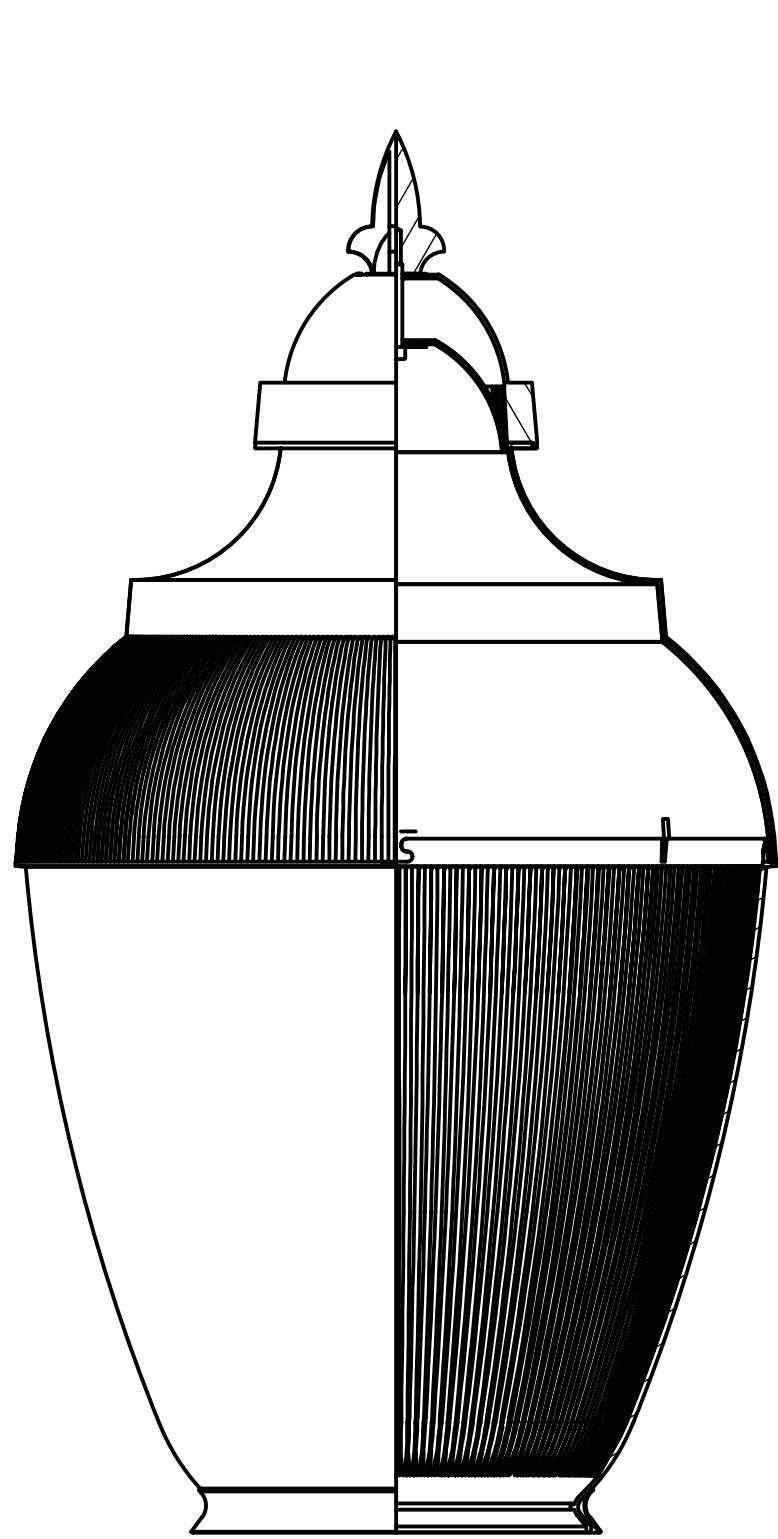
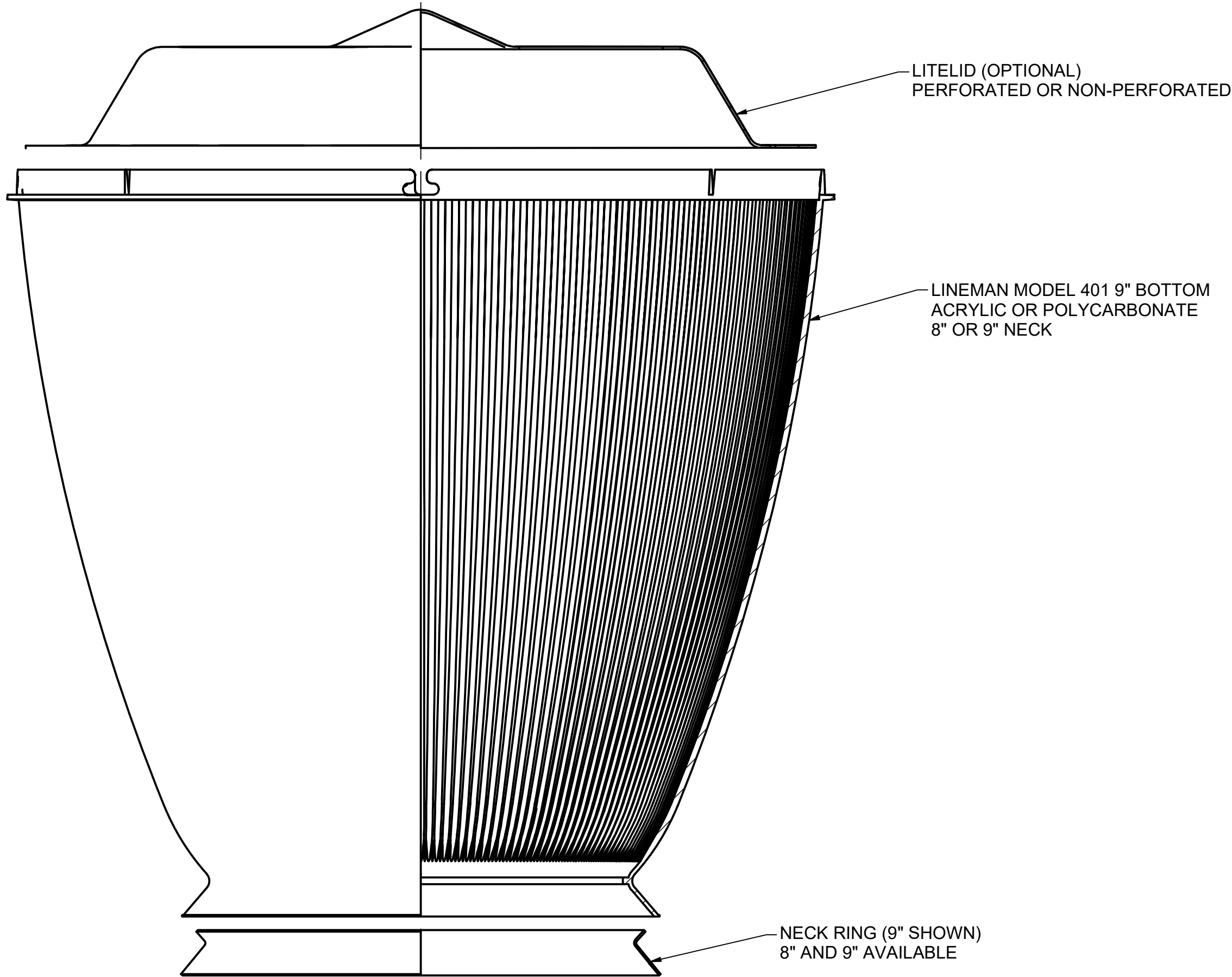
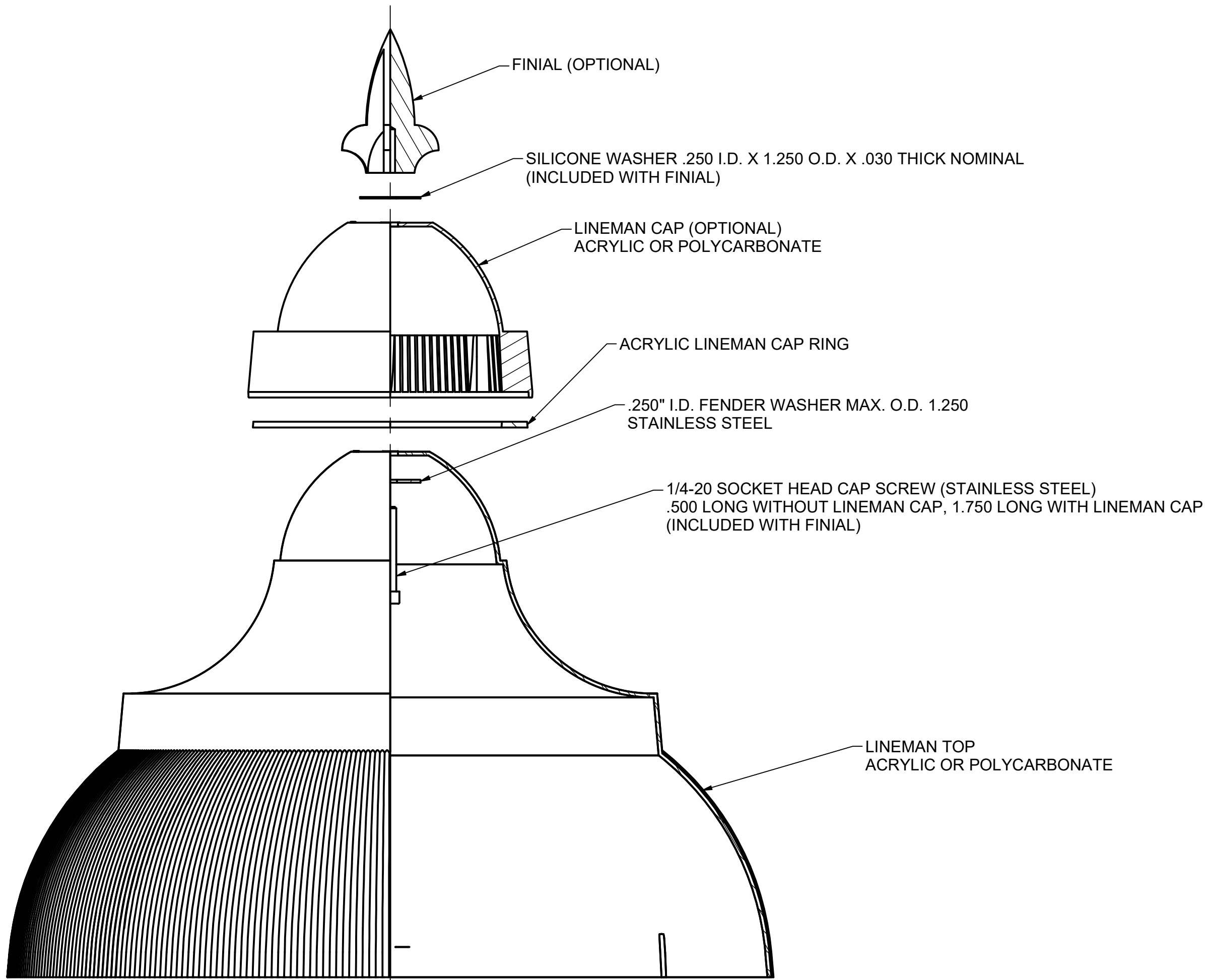
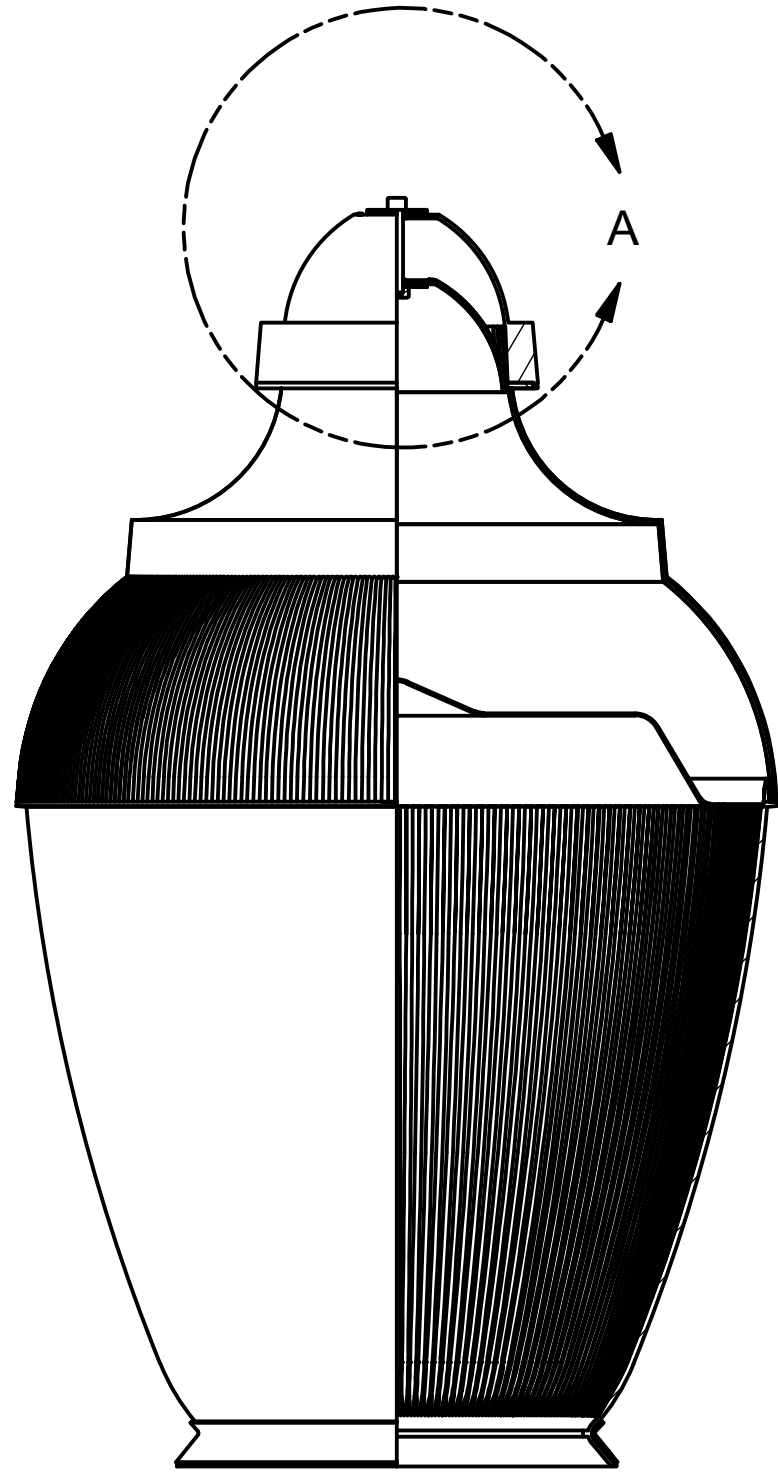


REV	EDCO	DESCRIPTION	DATE	APPROVED
P1		FOR PRELIMINARY REVIEW	11/12/2020	JRF

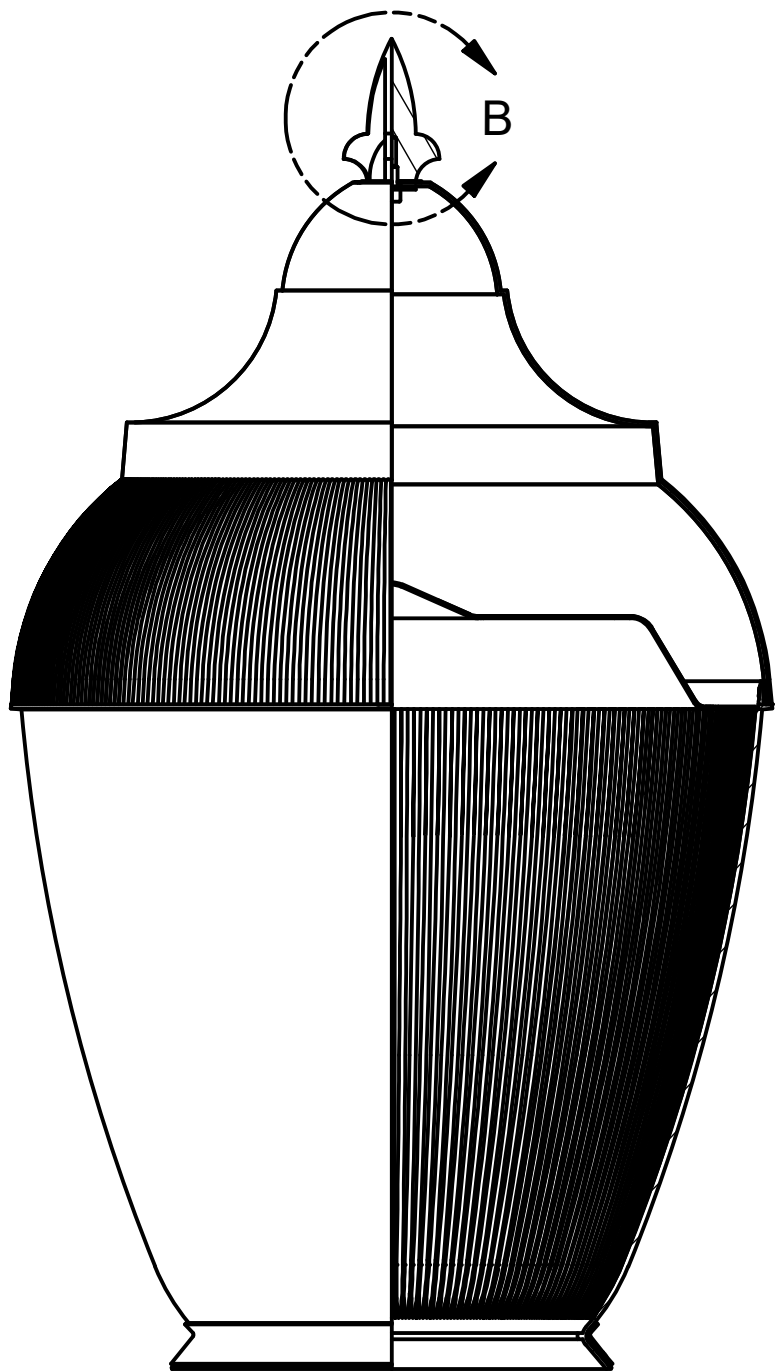


FINIAL
LINEMAN CAP
LINEMAN TOP
LINEMAN 8" BOTTOM
8" NECK RING

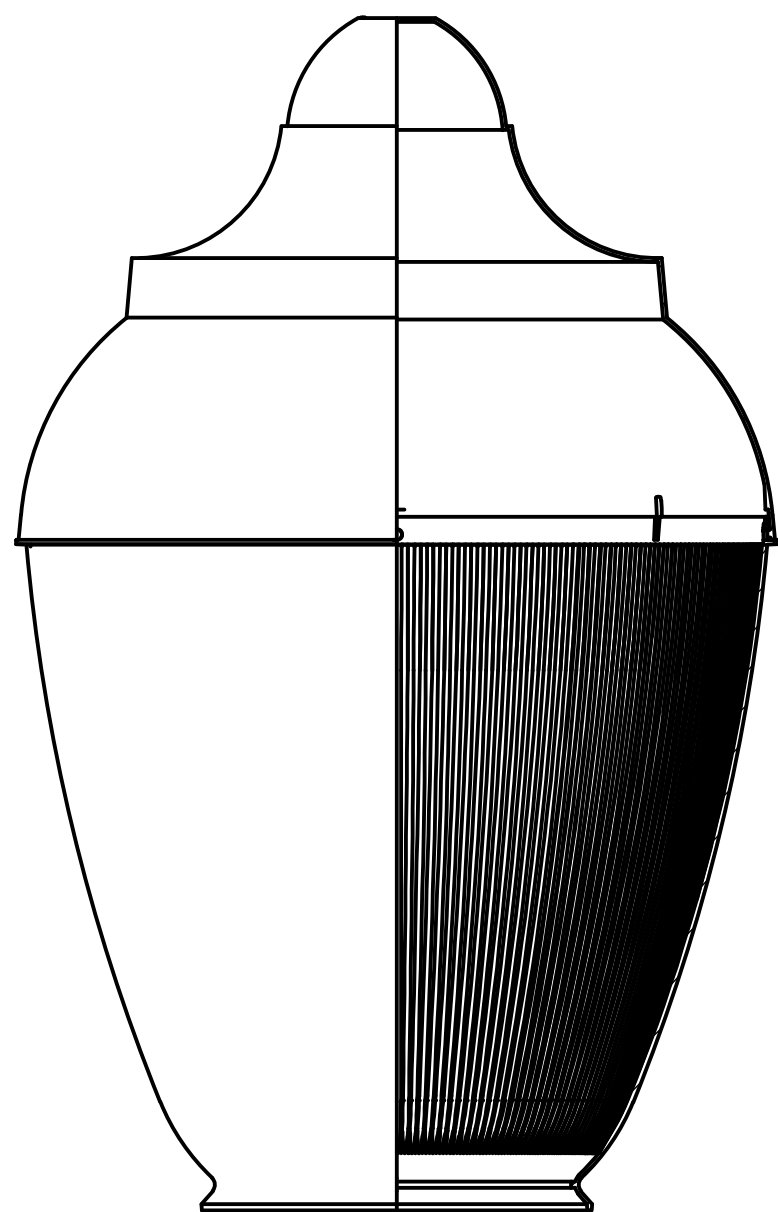


LINEMAN CAP
LINEMAN TOP
LITELID
LINEMAN 9" BOTTOM
9" NECK RING

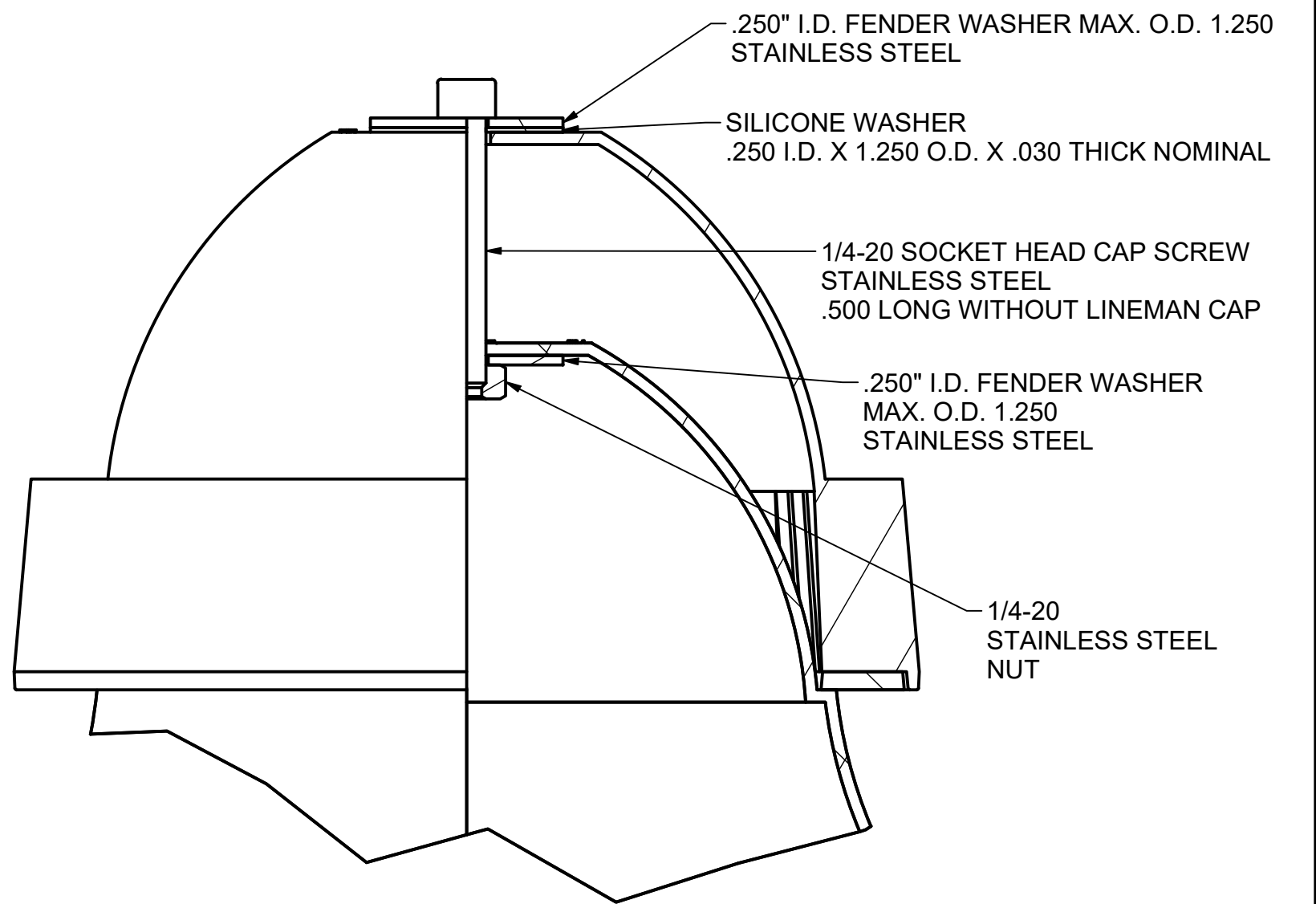
SOME EXAMPLES SHOWN
OTHER COMBINATIONS POSSIBLE



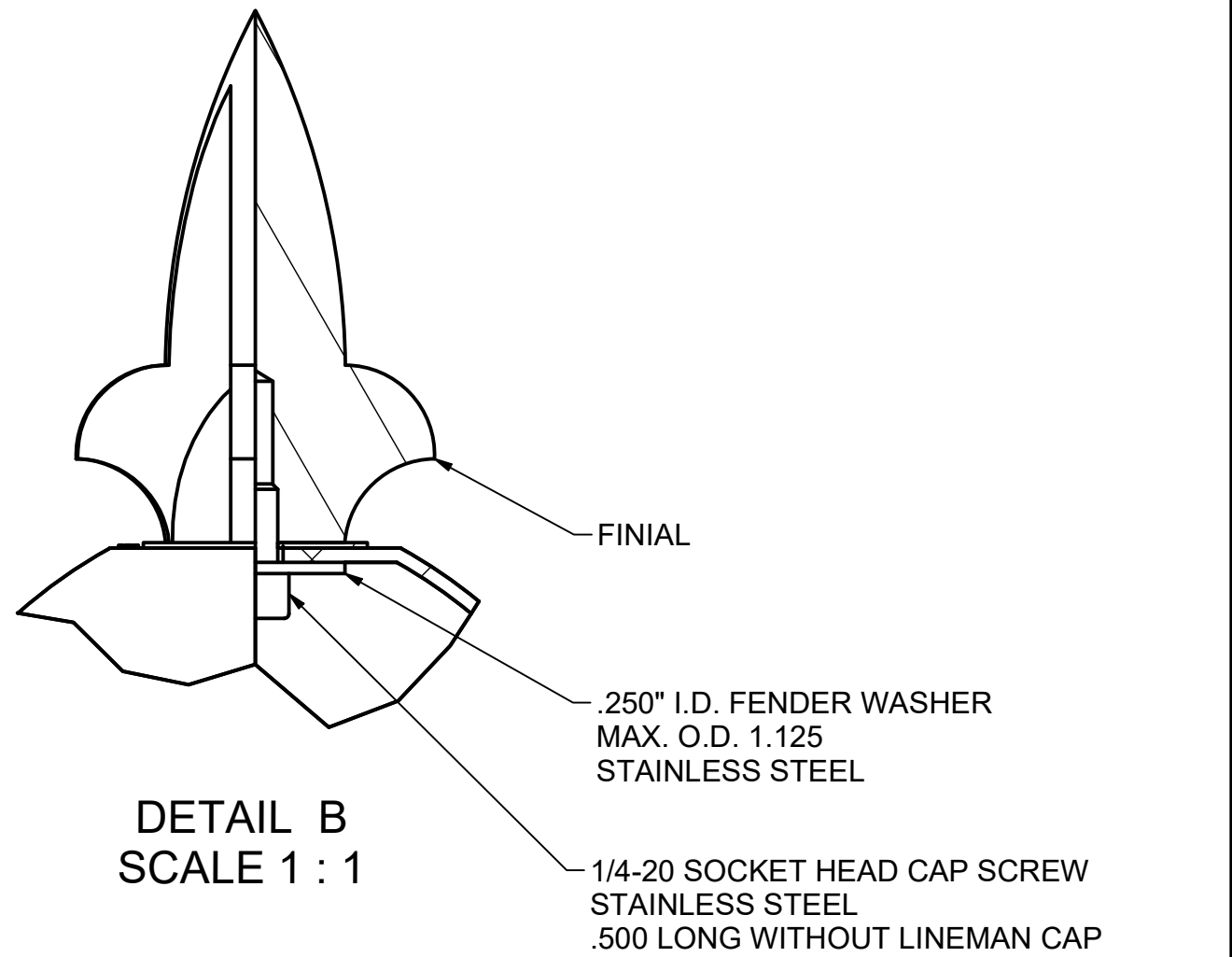
FINIAL
LINEMAN TOP
LITELID
LINEMAN 9" BOTTOM
9" NECK RING



LINEMAN TOP
LINEMAN 8" BOTTOM
8" NECK RING



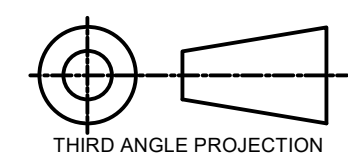
DETAIL A
SCALE 1 : 1



DETAIL B
SCALE 1 : 1

- NOTES:**
- UNLESS OTHERWISE NOTED:
ALL DIMS. ARE INCHES
 - THIS DOCUMENT CONTROLS ALL CRITICAL DIMENSIONS AND FEATURES OF THE PART/MODEL AND SHALL BE USED WITH SPECIFIED MODEL FOR COMPLETE PRODUCT DEFINITION. ALL FEATURES NOT DIRECTLY DIMENSIONED TO BE CONTROLLED BY THE 3D MODEL. DIMENSIONED FEATURES TAKE PRECEDENCE OVER THE 3D MODEL
 - REFER TO THE GENERAL INSPECTION AND MATERIAL SPECIFICATIONS DOCUMENT FOR ADDITIONAL INFORMATION INCLUDING MATERIAL AND DIMENSIONAL INFORMATION.

A.L.P.		LEXALITE	
AN A.L.P. BRAND		AN A.L.P. BRAND	
PROPERTIES	DRAWN BY	DATE	CHECKED BY
MAT'L: N/A	JohnFord	11/12/2020	JoelRobinson
DESCRIPTION	DATE	DATE	DATE
BASEWALL: N/A			
FINISH: N/A			
VOLUME: N/A			
MODEL FILENAME	DRAWING FILENAME		
Lineman 401 Exploded Assembly with Finial with Cap.iam	Lineman Model 401 Assembly Options.idw		
NOTICE: THIS DRAWING AND THE INFORMATION IT DISCLOSES IS THE EXCLUSIVE PROPERTY OF A.L.P. ANY REPRODUCTION OR USE OF THIS DRAWING IN WHOLE OR IN PART, WITHOUT THE EXPRESS CONSENT OF THE PROPRIETOR, IS PROHIBITED		DO NOT SCALE DRAWING	SHEET 1 OF 1
DWG NO.		REV	
		P1	



THIRD ANGLE PROJECTION