



General Description

The LBE is unique and attractive luminaire maximizing temperature management for optimum performance with sleek modern, appearance. Rigid construction for industrial, commercial and residential applications. Designed for easy assembly and installation in a lightweight and small size to conserve space.

Features and Benefits

- Compact, rigid and lightweight construction.
- Easy snap on lens to ease maintenance.
- Lens can be secured by screws for security.
- Reflector option for aisle distribution.
- Power connections are facilitated through KO's in sides, ends and top.
- Top access plate provides quick field wiring.
- Light engine (optional)
- IR-Tec Sensor (optional)
- Custom LED mounting available for customer supplied module.
- Optional material finishes.
- Rigid polycarbonate lens.
- Compatible with A.L.P. suspension systems

Application

Suitable for suspended applications using cable or chain. Flexibility to meet low bay or high bay requirements in warehouses, distribution centers, sport facilities, manufacturing facilities, retail store or unique modern spaces.

Ordering Information

Please call 877-257-5841 for pricing and delivery.

Dimensions

Length 24.1 or 46.1"

Width 5"

High 6"

Housing

Silver anodized

Pre-painted white

Lens

Extruded polycarbonate lens in clear or diffuse

Power entry:

7/8 KO's located on sides, ends and top

Light Source

24,000LM, 21,000LM, 18,000LM, 15,000LM

Two 44" Fulham LED module

Two 96W, Class II, 0-10 v dimming

12,000LM, 10,000LM, 8,000LM,

One 44" Fulham LED module

One 96W, Class II, 0-10 v dimming

L70>60,000Hrs/L90>40,000Hrs

Available CCT: 5000K and 4000K

CRI: 80 CRI

Efficacy: 130lm/w

Ambient Temperature:

40° C (113°F) when using Fulham light engine

Warranty:

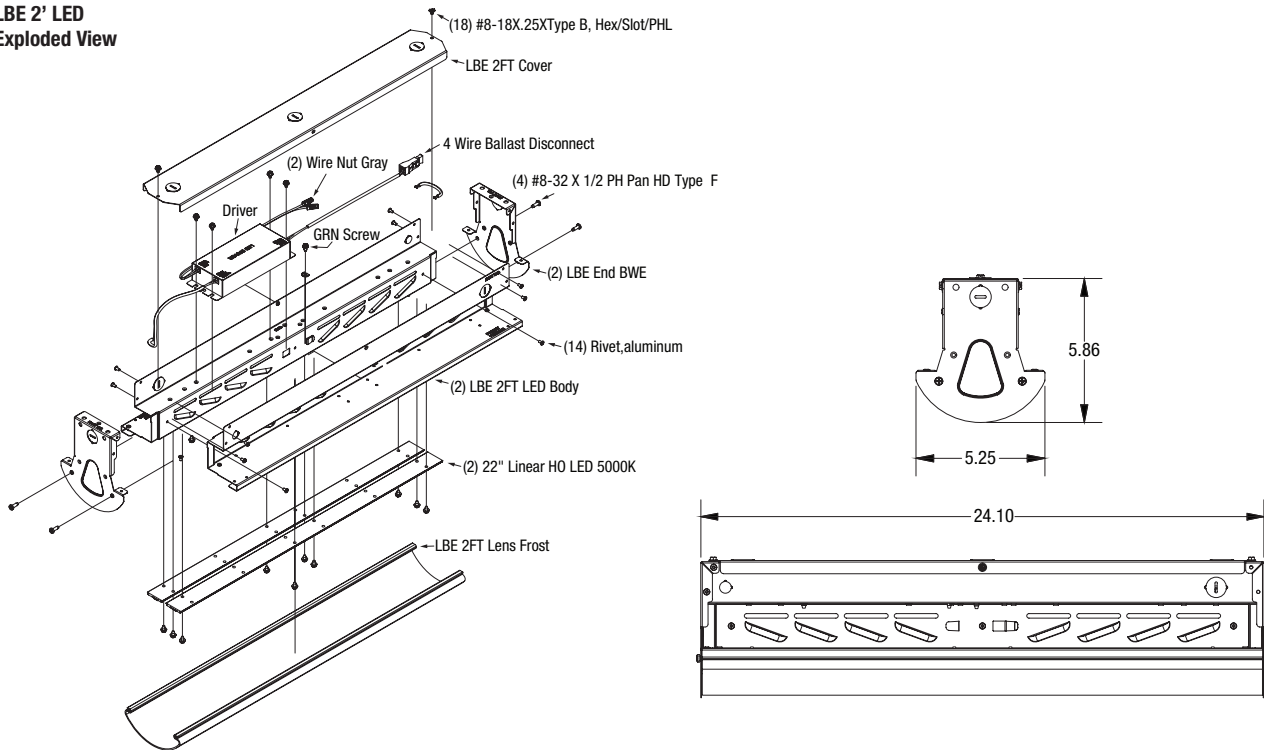
5 Years

Please contact A.L.P. for pricing and delivery.

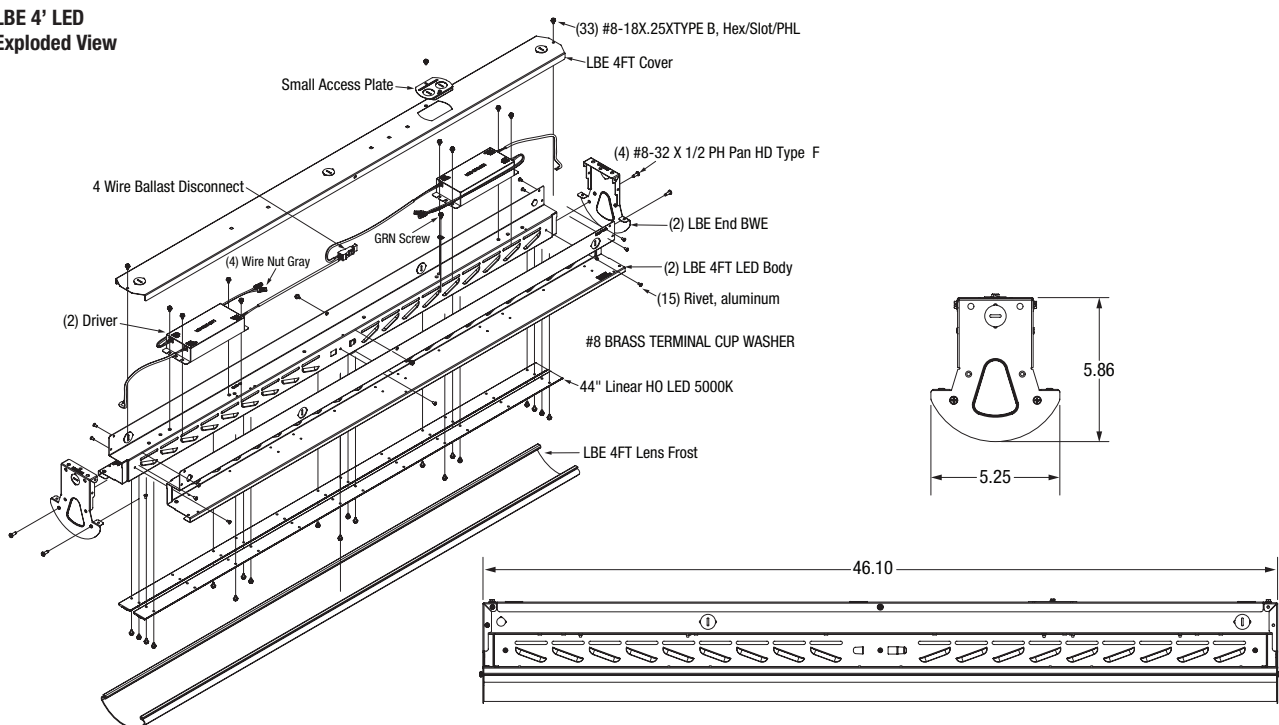
All specifications subject to change without notice. A.L.P. assumes no responsibility for these materials in any luminaire or application.

The product is an OEM component kit requiring final assembly by a qualified OEM fixture manufacturer.

LBE 2' LED Exploded View



LBE 4' LED Exploded View



This drawing is for reference only. Actual part dimensions will vary. Customer is urged to review actual samples to confirm fit and function. All specifications and dimensions are subject to change without notice.