



General Description

The S22 is a optic intended for use with LED highbays and induction sources. Unlike traditional reflectors, the S22 is shallow so as to allow high beam angles. Its large flat top allows it to be easily adapted to most any fixture without the need for expensive collars. The lower flange mimics traditional reflectors allowing for a wide range of bottom lenses and standard clamp bands.

Features and Benefits

- Standard clear acrylic version is cost effective and provides a traditional yet low profile appearance
- Adaptable to any LED POD with an opening of up to 10 inches
- Interface[®] version yields high down light efficiency and a gentle glow for maximum brightness control
- Polycarbonate, DR acrylic and Frosted acrylic are custom options
- Accommodates standard 22" diameter lenses including the Model 622 Drop Lens, 822 Conical Drop Lens and flat lenses. Bottom lenses are primarily for low bay applications where brightness control is paramount. Bottom lenses also enhance uplight.

Applications

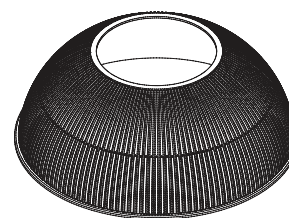
High bay and low bay applications where a traditional fixture appearance, brightness control and/or wide distribution are desirable. Before final installation of Reflexors, dissipate static on parts by spraying with de-staticized air or by wiping with a clean damp rag. This will help minimize dust build up on the Reflexor.

Service Life

Please visit our website www.alpadvantage.com under the Resources section and then select Warranties for more information.

Ordering Information

Please call 877-257-5841 for pricing and delivery. S22 order sheet for mounting-hole pattern available at www.alpadvantage.com



Dimensions

8.2" height
22" diameter

Materials

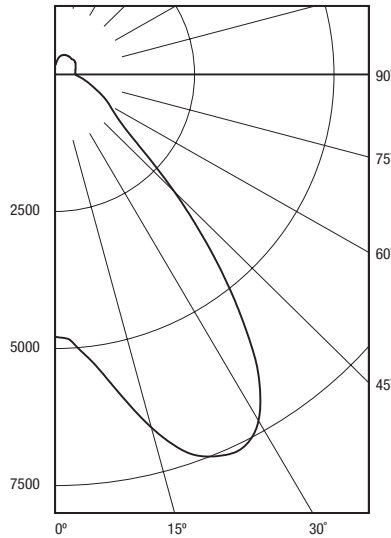
Acrylic:
Clear
Lumieo[™]
Interface[®]
Impact Modified
Moon Glow[™]
Polycarbonate:
Clear

Accessories/Options

Model 622 Drop Lens
Model 822 CDL
Model 822 Flat Lens
822 Clamp Band
822 Wire Guard

Fixture Performance for Reference Only

Report Number: 04875FP
Issue Date: 01/28/14
Prepared for: A.L.P. LexaLite Brand
Catalog Number: S22
Luminaire: S22 LED POD (KBO KHB0N2303N62) with Interface Refractor and 622 Acrylic Drop Lens
Lamp: 140 LEDs Arranged in Concentric Circular Pattern on KBO-GKXTE-1014-Z-1.0U LED Board
Mounting: Pendant
Driver: Mean Well HLG-240H-36A
Watts: 232.86 @ 120.03 volts
Lumens per watt: 76.6



Lumen Summary

Zone	Lumens	% Fixture
0-30	5887	33.0
0-40	9701	54.4
0-60	13285	74.5
0-90	15370	86.2
90-120	1203	6.7
90-130	1584	8.9
90-150	2159	12.1
90-180	2459	13.8
0-180	17837	100.0

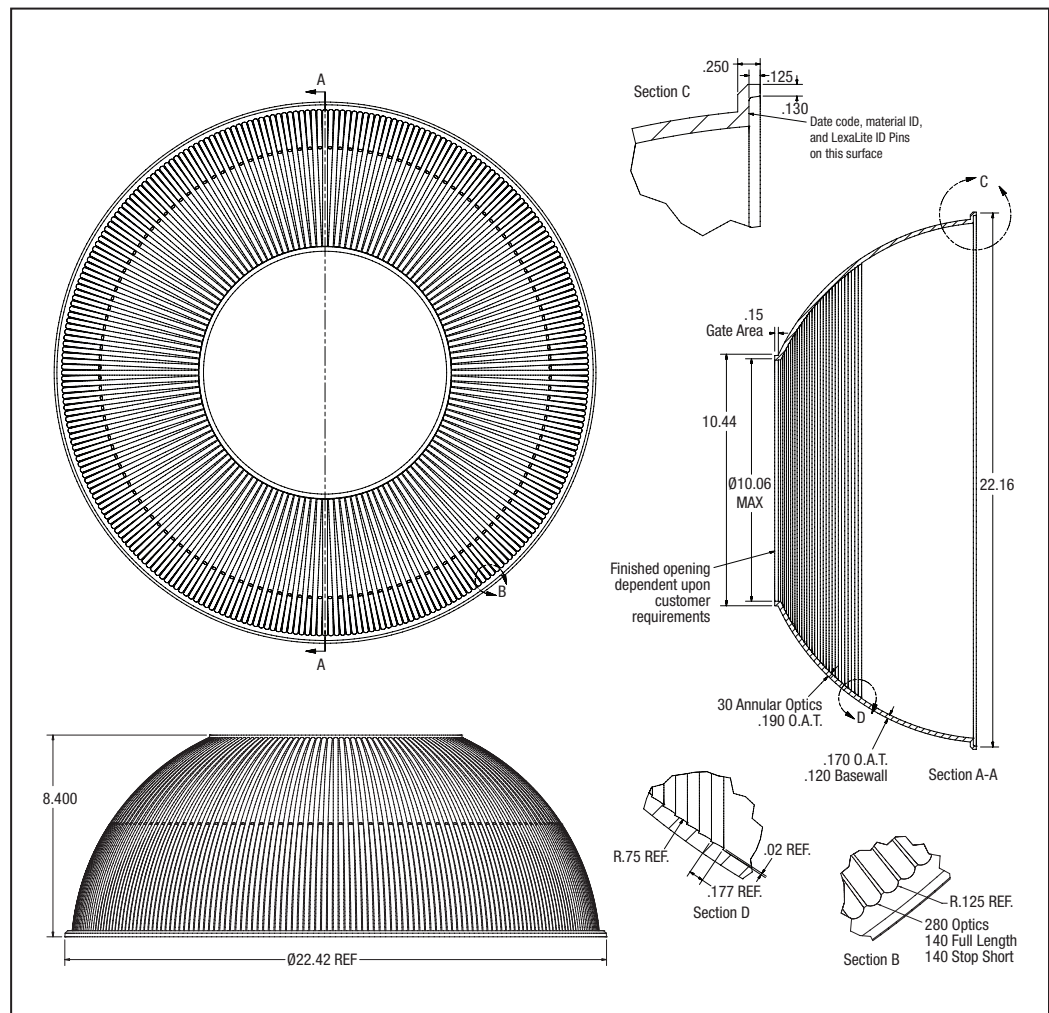
Materials

See the LexaLite® brand price list for current part numbers and material offerings. Up-to-date and detailed material specifications can be found in the Resources section on our website www.alpadvantage.com.

Notice

A.L.P. assumes no responsibility for suitability of these materials in any luminaire or application. Please test for fit and function prior to ordering project quantities.

While A.L.P. utilizes IESNA testing procedures and believes our testing results to be accurate, A.L.P. provides photometry for reference only. Actual results will vary based on the actual light source(s) and power source(s) used, i.e. ballast, driver, generator, etc. and the combinations in which they are used, as well as operating temperatures, and other electrical and environmental variables. We urge that customers perform their own fixture qualifications prior to making performance-based claims. In no event will A.L.P. be liable for any loss or damage, including without limitation, indirect or consequential loss or damage in connection with the use of this information.



This drawing is for reference only. Actual part dimensions will vary. Customer is urged to review actual samples to confirm fit and function. All specifications and dimensions are subject to change without notice.