



General Description

This multi-purpose LED fixture kit provides a Type V distribution with a main beam of 55 degrees vertical. This combination is suited for intersection, garage, low-bay and other general lighting applications. This assembly is IP66 rated. The LEDs are mounted 6-12" away from the optical surface which provides exceptional hiding power.

Housing

This one-piece casting design can effectively dissipate up to 100W in a 40°C ambient temperature with an appropriate LED module. The cast aluminum heat sink is offered either raw or powder coated white. There are two suggested LED Board mounting options. To achieve a wide, Parking Garage distribution, an LED board may be mounted to the horizontal inside top surface.

For a narrower distribution there are 12 internal LED board mounting surfaces which are canted 20 degrees from vertical. A new board mounting feature allows a variety of different board shapes and sizes without the need for any drilling or tapping.

Platform II Dome Lens

The acrylic prismatic lens provides exceptional LED hiding and an excellent light distribution. Moon Glow™ acrylic, Lumieo™ acrylic and polycarbonate version are optional.

Light Engine Requirements

Suitable light engines are 100W or less, not including driver. For flat plate mounting, LEDs may have a variety of distributions depending on desired light output. For angled face mounting, LEDs should have a 150° FWHM beam or narrower. Each LED, board, and mounting will be different and the customer is responsible for determining the suitability of their LED package with these components.

Approvals and/or Listings

- ETL Listed to UL1598 and 8750; file sharing program available to all customers
- IP66 Rated
- NSF International certified for NSF/ANSI Standard 2 – Food Equipment

Service Life

Please visit our website www.alpadvantage.com under the Resources section and then select Warranties for more information.

Ordering Information

Please call 877-257-5841 for pricing and delivery.

LED Light Engine Lumens

	Driver
	INVENTRONICS EUC-096S280DT
LED Module	2-Rows
9.1" Round with 120 LEDs; 5000K -77W	8032 lm, 74.80W, 107.38lm/W

Dimensions

8.7" high
13.9" diameter

Materials

Acrylic:
Clear
Lumieo™
Moon Glow™
Polycarbonate:
Clear

Accessories/Options

Mounting Hook
Lens Clips
LED Driver Cover
Aluminum Reflector
Silicone Gasket



Flat LED Board Location

ETL File Number

102369752CHI-001 Safety
102510057CHI-001 IP

Ask us about our Multiple Listee and File sharing program for your LexaLite Brand SSL luminaires.

Contact the Optical Engineering Manager
(231) 547-6584
www.platformseries.com

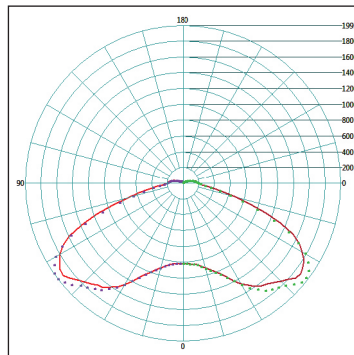
All specifications subject to change without notice. A.L.P. Lighting Components, Inc. assumes no responsibility for these materials in any luminaire or application.

The product is an OEM component kit requiring final assembly by a qualified OEM fixture manufacturer.

Platform II with Dome Lens Multi-purpose LED fixture kit

Fixture Performance for Reference Only

A.L.P. LexaLite Brand Test Report 05325	
Specification	Platform II
Input Wattage	74.80
Delivered Lumens (lms)	8032
Efficacy (LpW)	92.107.38
Voltage (V)	120-277v



Lumen Summary

Zone	Lumens	%Lamp	%Fixt
0-30	1037.19	12.91	12.91
0-40	2052.23	25.55	25.55
0-60	5144.25	64.05	64.05
0-90	7655.40	95.31	95.31
40-90	5603.17	69.76	69.76
60-90	2511.15	31.26	31.26
90-180	376.60	4.69	4.69
0-180	8032.00	100.0	100.0

Materials

See the LexaLite® brand price list for current part numbers and material offerings. Up-to-date and detailed material specifications can be found in the Resources section on our website www.alpadvantage.com.

When using acrylic, the surface temperature of the lens should not exceed 80°C. When using polycarbonate. The surface temperature of the lens should not exceed 90°C.

Quality

The Platform casting is primarily a functional industrial grade component. Our pricing is based on this expectation.

Caution

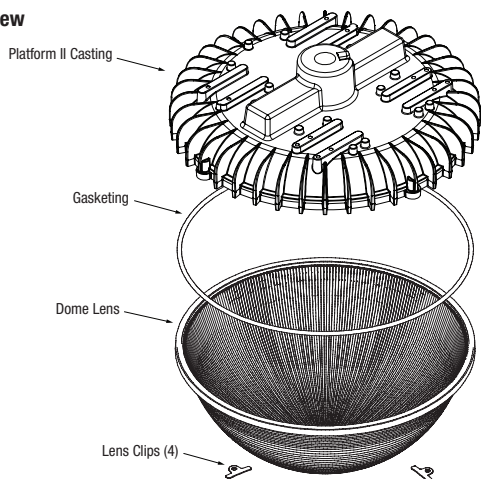
Sharp edges may occur at several locations on the part. We urge customers to select the shot-blasted option which reduces this hazard and also to wear gloves when handling.

Notice

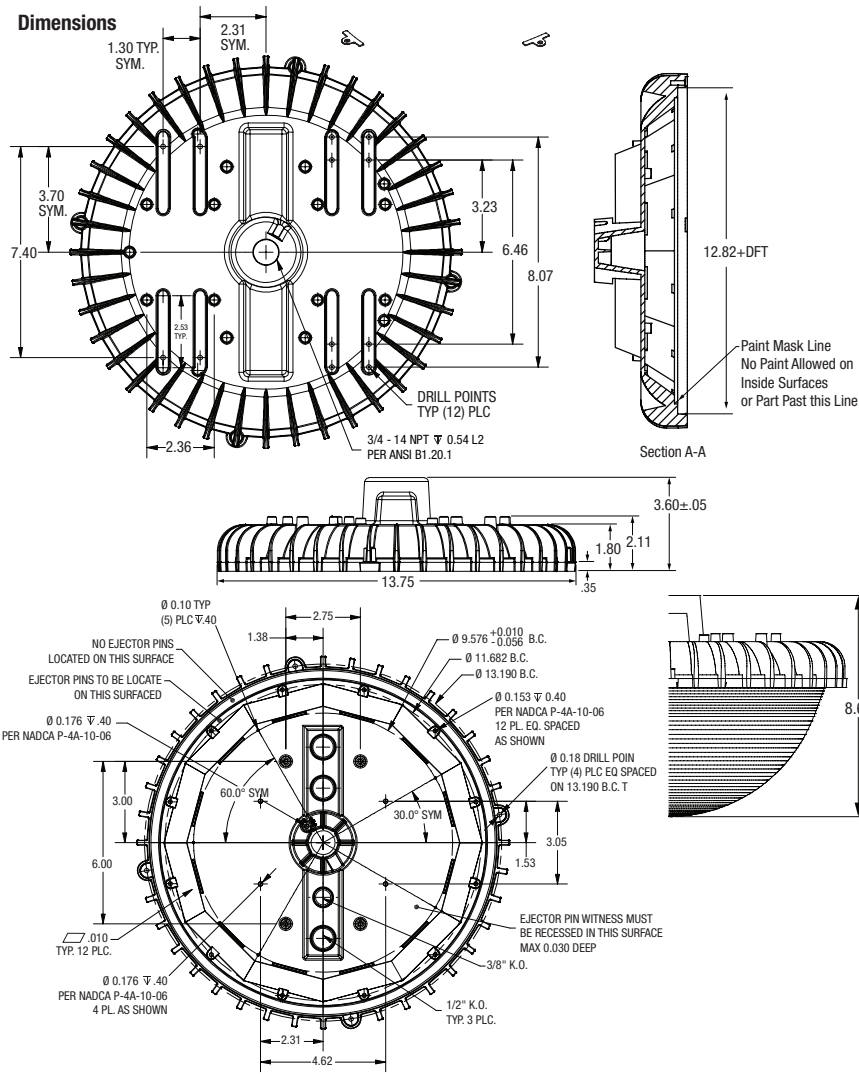
A.L.P. assumes no responsibility for suitability of these materials in any luminaire or application. Please test for fit and function prior to ordering project quantities.

While A.L.P. utilizes IESNA testing procedures and believes our testing results to be accurate, A.L.P. provides photometry for reference only. Actual results will vary based on the actual light source(s) and power source(s) used, i.e. ballast, driver, generator, etc. and the combinations in which they are used, as well as operating temperatures, and other electrical and environmental variables. We urge that customers perform their own fixture qualifications prior to making performance-based claims. In no event will A.L.P. be liable for any loss or damage, including without limitation, indirect or consequential loss or damage in connection with the use of this information.

Exploded View



Dimensions



This drawing is for reference only. Actual part dimensions will vary. Customer is urged to review actual samples to confirm fit and function. All specifications and dimensions are subject to change without notice.

Platform II with Dome Lens Multi-purpose LED fixture kit

CASTING (Select One)			
Part Number	Description	Material	Qty/Case
209371	HSG/Heat Sink	Die cast alum, Raw, with 3/4" NPT thrd Hole 10	10
LENSES (Select one)			
Part Number	Description	Material	Qty/Case
833945	Dome Lens	Acrylic Clear	10
833947	Dome Lens	Polycarbonate Clear	10
833953	Dome Lens	Acrylic Lumieo	10
833957	Dome Lens	Moon Glow Acrylic	10
LENS CLIPS			
Part Number	Description	Material	Qty/Case
209347	Lens Clips (4 per unit)	040 SS PLC-0001/Recommend 4 per unit	n/a
REFLECTOR			
Part Number	Description	Material	Qty/Case
833944	Inner Reflector	"Specular aluminum"	400
DRIVER COVER			
Part Number	Description		Qty/Case
833980	Platform II LED Driver Cover for 1.05"		n/a
GASKET			
Part Number	Description	Material	Qty/Case
209366	Lens Gasket	Silicone DGS4U-6080-240 x 37.5" long	n/a
HOOK			
Part Number	Description		Qty/Case
HOOK-PF	Platform HB Mounting Hook		50
HOOK-PF-HL	Platform HB Mounting Hook with Hole		50

Partner Components

LED Board and Drivers below intended for parking garage or wide low bay applications

Part Number	Item	Description	Supplier
98043	LED Board - Round	9.1" Round with 100Nichia; 5000K, 80CRI - 89W	Norlux
EUC-096S280DT(ST)	LED Driver	Inventronics 2800ma driver	Inventronics
PLED96W-034-C2800-D	LED Driver	TRP PLED96W-034-C2800-D	Thomas Research
SRC237XS31A-100W-50KISD-120/277	LED Board - Driver Combo	9.3" Round AC-Board LED; 5000K-100W	Lynklabs "Snapbrite"
EUC-096S280DT(ST)	LED Driver	Inventronics 2800ma driver	Inventronics

LED Boards and Drivers below intended for parking garage applications when used with PFI Drop Lens above; boards mounted on 12 faces

Part Number	Item	Description	Supplier
98038-04	LED Board - Round	2.5" Rect with 20 Nichia; 5000K, 80CRI - 7.75W/ea (x12?)	Norlux
TBD	LED Driver	INV EUC-096S045DT(ST) (Class I with 12 boards in series)	Inventronics
TBD	LED Driver	TRP PLED96W-213-C0450-D (Class I with 12 boards in series) TRP LED50W-111-C0450-D (Class I with 6 boards in series) TRP LED25W-18-C1400-D (2 drivers, class 2 in US&CAN with 3 boards in parallel on each driver) TRP LED50W-036-C1400-D (2 drivers, class 2 with 2 boards in series and 3 in parallel per driver)	Thomas Research

LED Boards and Drivers below intended for parking garage applications when used with PFI Drop Lens above; boards mounted on 12 faces; 12

Part Number	Item	Description	Supplier
TBD	LED Board -COB	Bridgelux Vero 10 5000K, 70 CRI BX-RC-50C1000-B-04	Future Electronics
TBD	LED Driver (x2)	INV EUC-060S035ST (Class I with 2x6 boards in series)	Inventronics
TBD	LED Driver	INV EUC-120T035DT(ST) (Class I with 3x4 boards in series)	Inventronics

GASKET

Part Number	Item	Description	Supplier
TBD	Lens Gasket	Silicone DGS4U-6080-240 x 37.5" long	Sur-Seal

Notes:

- Unit shall accept 10KV to 20KV surge protection devices in internal wiring.
- Unit shall accept wireless control module to be mounted on top (external).
- Dome lens may be cut in center to allow for motion / occupancy sensor.

CASTING



209371

LENS



833945

LENS CLIP



209347

GASKET



209366

Hook



HOOK-PF-HL