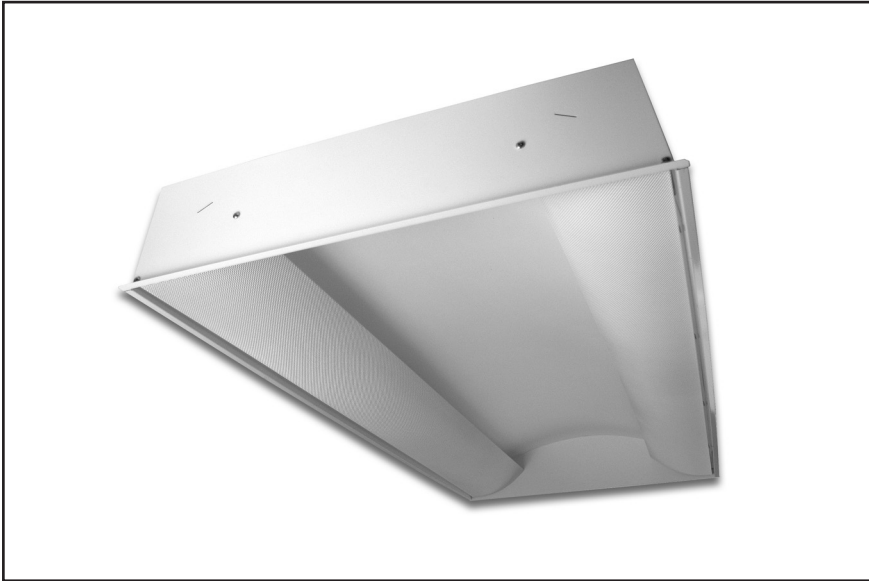


SDI Recessed

2x2, 2x4 Side Direct/Indirect



SDI 2x4 Side Direct/Indirect

Description

An attractive direct/indirect fluorescent fixture housing with side-mounted lamps. The SDI provides soft, balanced illumination for a contemporary appearance and comfortable light environment.

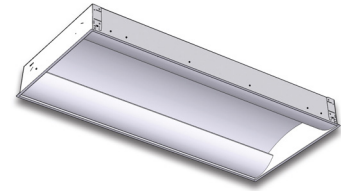
The housing and two lamp compartments are fully recessed above the ceiling plane, minimizing lamp exposure. The perforated baffles and curved reflector produce a combination of direct and indirect light, fully illuminating the fixture housing.

Application

Suitable for recessed commercial and institutional applications such as offices, hospitals and schools. Intended for use in standard 15/16" inverted T-bar grid ceilings.

Ordering Information

Please call 877-257-5841 for price and delivery.



Housing

Heavy-gauge cold rolled steel

Perforated Basket

White perforated metal basket with white opal acrylic diffuser inlay

Lamps

(2) Biax, Dulux L or PL-L type with 2G11 bases, or (2) F14/4T5 or F24/T5HO type for 2x2

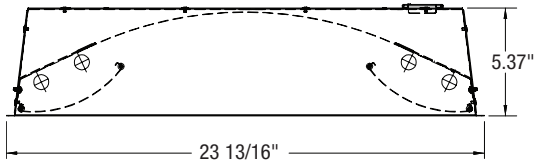
(4) Biax, Dulux L or PL-L type with 2G11 bases, or (4) F28/T5 or F54/T5HO type for 2x4

Finish

Pre-painted white polyester polymer with minimum 82% reflectivity

Mounting

Standard troffer mounting for easy installation in T-bar ceilings with earthquake feature



End View: Side Direct/Indirect

Catalog No.	Lamps	Length
SDIALP-2x2	(2) 2G11 based or (4) F14/T5 or F24/T5HO	24"
SDIALP-2x4	(4) 2G11 based or (4) F28/T5 or F54/T5HO	48"

Notice

Dimensions subject to change without notice.

This product is an OEM component kit requiring final assembly by a qualified OEM fixture manufacturer.

THIS PRODUCT IS NOT A COMPLETE FIXTURE ASSEMBLY.