**Dimensions**

5.5" diameter
12" height
12" width

Materials

Acrylic:
Clear
White
Polycarbonate:
Clear
White

General Description

These injection molded lenses are manufactured using clear acrylic and clear polycarbonate. The polycarbonate version provides protection of the light source against abuse, such as severe impact and vandalism. This new 12x12 version is intended for use with existing die cast housings, such as the QSSI VN41. The prism structure provides excellent lamp hiding power and improves the distribution for better uniformity.

Features and Benefits

- Square prism pattern provides a square distribution
- US made refractor improves made in the USA content
- UL recognized acrylic and polycarbonate materials
- Used with LED, HID, incandescent, CFL and various other fluorescent lamps depending on the luminaire

Applications

The Series I43 12x12x5.5 Security Lenses are suitable for interior and exterior applications. The NEC requires luminaires listed for use with metal halide lamps to either utilize an open-fixture rated lamp or a lamp containment barrier. Records of this testing are the responsibility of the luminaire manufacturer. The reflector/housing design will impact operating temperatures. Thermal testing is advised.

Before final installation, dissipate static on parts by spraying with de-staticized air or by wiping with a clean, damp rag. This will help minimize dust build up.

Service Life

The service life of acrylic refractors is virtually unlimited when used within the recommended temperature limit. Polycarbonate refractors are subject to yellowing especially when used with high ultraviolet output light sources; this effect is enhanced at high temperatures.

Ordering Information

Please call 877-257-5841 for pricing and delivery.

Fixture Performance for Reference Only

Report Number: 04995FP

Issue Date: 04/17/14

Prepared for: LexaLite Brand

Catalog Number: I-43

Luminaire: 12x12 canopy fixture with polycarbonate deep I-43 with molded-in texturing

Lamp Cat. No.: 20 Cree XML LEDs, (2) outside boards of 6 LEDs each and (2) inside boards running linearly with 4 LEDs each

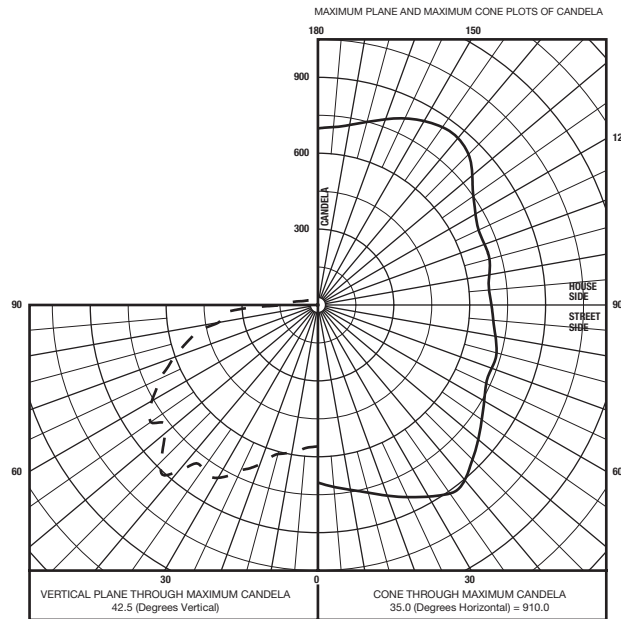
Mounting: Pendant

LED Driver: Inventronics

EUC-050S070ST

Watts: 47.3 Watts @ 119.92 Volts

Test Procedure: IESNA LM-79-08



Flux Distribution by Solid Angle (Per IESNA TM-15-07, Luminaire Classification System for Outdoor Luminaires)		
	Lumens	Percent of Fixture
Forward Light	1852.	47.5
FL (0 - 30)		7.2
FM (30 - 60)		22.2
FH (60 - 80)		14.1
FVH (80 - 90)		3.9
Back Light	1807.	46.3
BL (0 - 30)		7.1
BM (30 - 60)		21.5
BH (60 - 80)		13.7
BVH (80 - 90)		3.9
Uplight	240.	6.1
UL (90 - 100)		2.7
UH (100 - 180)		3.5
Trapped Light	0.	0.0
Total Flux	3899.	100.0
Lumens per Watt	82.43	

Materials

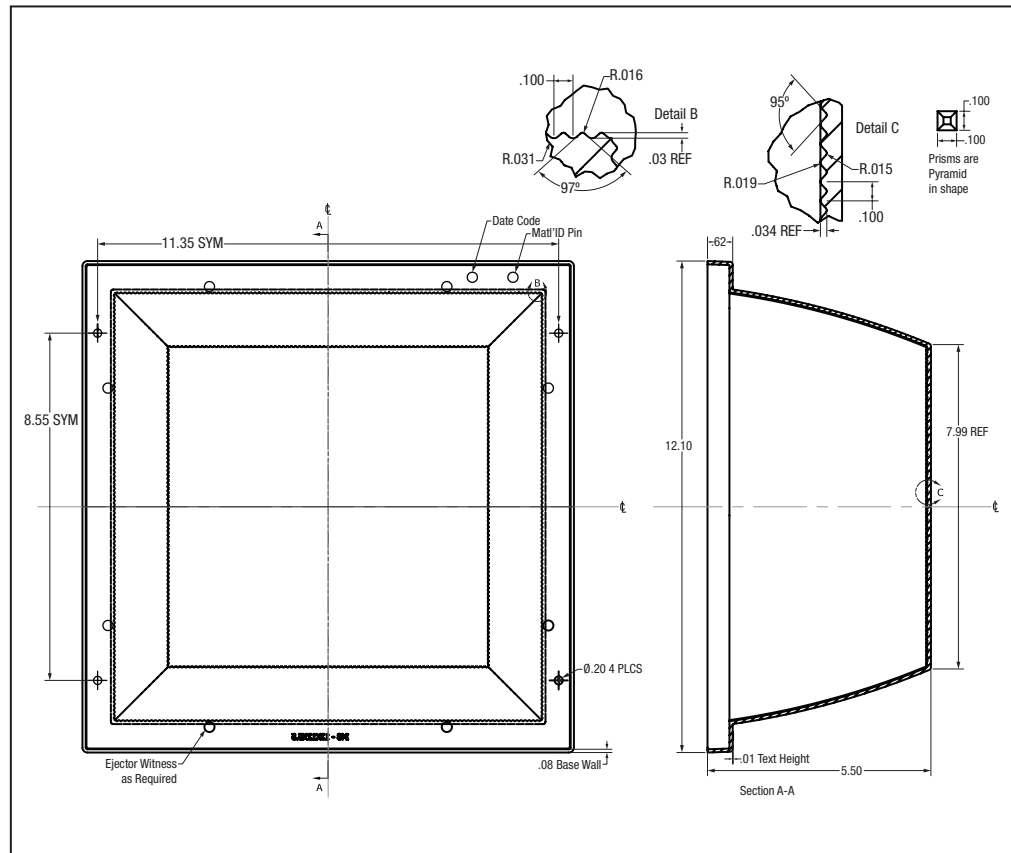
See the LexaLite® brand price list for current part numbers and material offerings. Up-to-date and detailed material specifications can be found in the Resources section on our website www.alpadvantage.com.

When using acrylic, the surface temperature of the lens should not exceed 80°C. When using polycarbonate, the surface temperature of the lens should not exceed 90°C.

Notice

A.L.P. assumes no responsibility for suitability of these materials in any luminaire or application. Please test for fit and function prior to ordering project quantities.

While A.L.P. utilizes IESNA testing procedures and believes our testing results to be accurate, A.L.P. provides photometry for reference only. Actual results will vary based on the actual light source(s) and power source(s) used, i.e. ballast, driver generator, etc. and the combinations in which they are used, as well as operating temperatures, and other electrical and environmental variables. We urge that customers perform their own fixture qualifications prior to making performance based claims. In no event will A.L.P. be liable for any loss, damage, including without limitation, indirect or consequential loss or damage in connection with the use of this information.



This drawing is for reference only. Actual part dimensions will vary. Customer is urged to review actual samples to confirm fit and function. All specifications and dimensions are subject to change without notice.