

Description

For the most cost effective, easy-to-transport strip conversion, A.L.P. offers the CAS Express. This simple kit upgrade provides tool-free maintenance and is an ideal solution to the challenge of converting a strip fixture into the energy efficient lighting we need now. The CAS Express fits all 4" to 4.25" 1-, 2- and 4-lamp strip fixtures.

Features and Benefits

- Ballast cover pre-punched for quarter turn fastener
- Quality bi-pin lampholders provided with "LH" designation
- Provides easy method to upgrade existing strips
- No special tooling required
- Lampholder brackets and ballast cover assembled on-site for ease of handling
- Meets UL #1598 standards

Applications

Suitable for relamping in commercial, industrial and institutional applications.

Ordering Information

Please call 877-257-5841 for price and delivery.

Notice

CAS Express units do not come with a ballast and are not pre-wired. Dimensions subject to change without notice. Please test for fit and function prior to ordering project quantities. Dimensions subject to change without notice.

Certifications

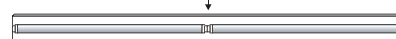
Components in this series are manufactured in the United States and are in compliance with fixtures seeking to meet both BAA and TAA standards and certification.

CAS Express Configurations

Order CASEX 82LH



Converts to

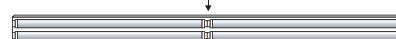


**Single Lamp T12 to
Two T5 or T8 Lamps**

Order CASEX 84LH



Converts to



**Double Lamp T12 to
Four T5 or T8 Lamps**

Convert 1- or 2-lamp 8' T12s
to 4' T5s or T8s

Material

Made from pre-painted 27 gauge white steel with 91% reflectance

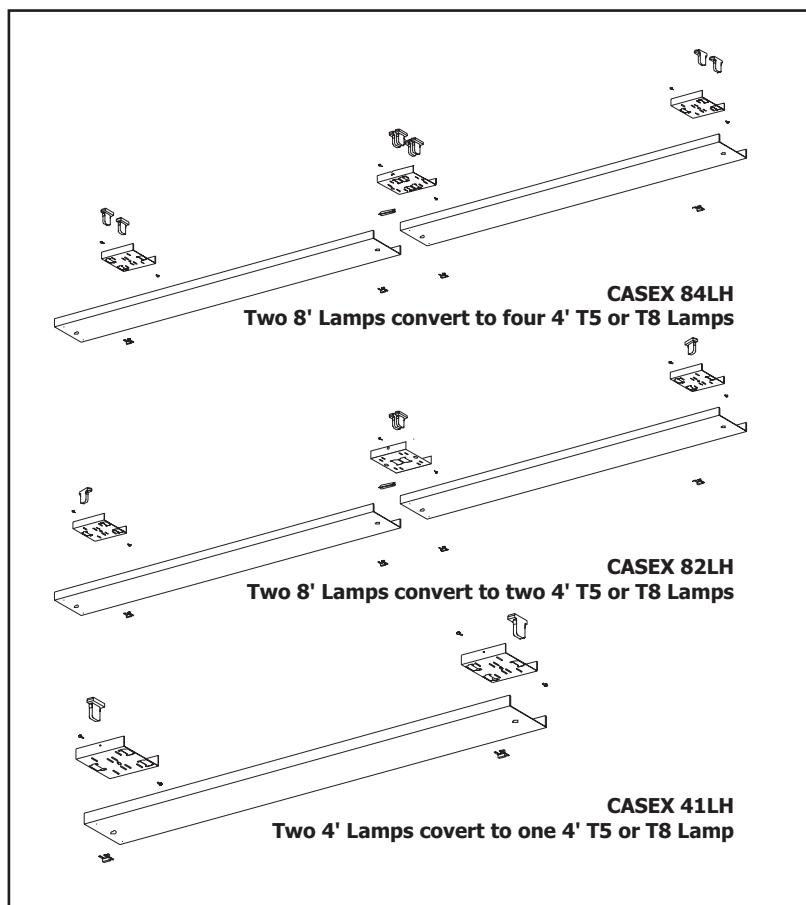
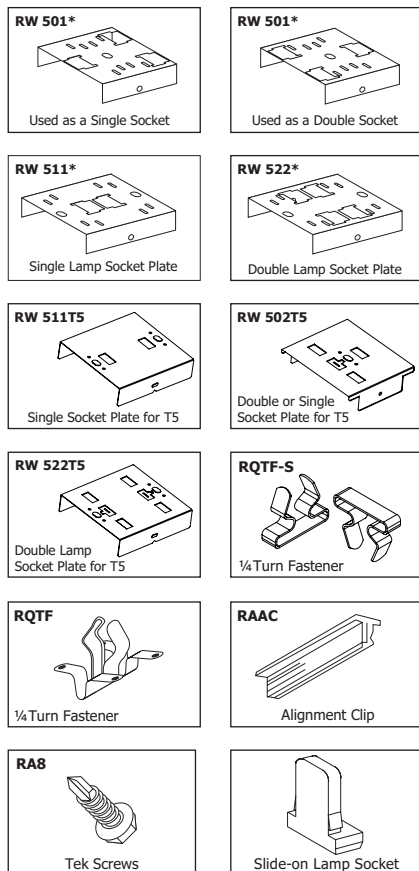


BAA 25.101 (a)(1)+(2)

LED LIGHTING

Manufactured in U.S.A. with
Over 50% Domestic Components

Accessories Details



Catalog Number	Description
CASEX 82LH	CAS EXP. T8 (2) 4' Lamp Tandem Includes (2) CASEXCOVER, (2) RW 501, (1) RW 511, (4) RQTF, (6) RA8, (4) lampholder
CASEX 84LH	CAS EXP. T8 (4) 4' Lamp Tandem Includes (2) CASEXCOVER, (2) RW 501, (1) RW 522, (4) RQTF, (6) RA8, (8) lampholder
CASEX 82LHT5	CAS EXP. T5 (2) 4' Lamp Tandem Includes (2) CASEXCOVER, (2) RW 502T5, (1) RW 511T5, (4) RQTF-S, (6) RA8, (4) lampholder
CASEX 84LHT5	CAS EXP. T5 (4) 4' Lamp Tandem Includes (2) CASEXCOVER, (2) RW 502T5, (1) RW 522T5, (4) RQTF-S, (6) RA8, (8) lampholder
CASEX 86LHT5	CAS EXP. T5 (6) 4' Lamp Tandem Includes (2) CASEXCOVER, (2) RW 502T5, (1) RW 522T5, (4) RQTF-S, (6) RA8, (12) lampholder
CASEX 41LH	CAS EXP. T8 (2) 4' Lamp Tandem Includes (1) CASEXCOVER, (2) RW 501, (2) RQTF, (4) RA8, (2) lampholder
CASEX 41LHT5	CAS EXP. T5 (2) 4' Lamp Tandem Includes (1) CASEXCOVER, (2) RW 502T5, (2) RQTF-S, (4) RA8, (2) lampholder

***Note:** All RW 501, RW 511 and RW 522 socket plate use slide-on lampholders. Do not use snap-in lampholders.

Notice

Reflector kits do not come with a ballast and are not pre-wired. A.L.P. assumes no responsibility for suitability of these materials in any luminaire or application. Please test for fit and function prior to ordering project quantities. Dimensions subject to change without notice.