

KDS-120PIV-NY

General Description

An all-purpose 1-light economy strip with pivoting end-plates. On assembled fixtures, the pivoting ends fold down to protect the sockets and provide compact shipping and storage. When rotated 90 degrees into upright position, the ends snap and lock into place.

Features and Benefits

Double KO access on 4 ft and longer to facilitate wiring of units for multiple ballast configurations.

Snap-in end cap for faster and easier assembly.

Cable mounting in the center for greater adaptability.

Universal Yoke and Toggle Kit suspension option available.

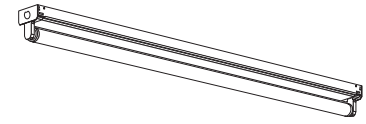
Approved for use in New York City by the Electrical Division of the NYC Department of Buildings.

All KDS bodies include the following options:

- KO for chain hanger
- Side KO for conduit
- Pull switch KO
- Starter KO
- Convenience outlet KO.

Ordering Information

Please call 877-257-5841 for price and delivery.



Housing

Die-formed heavy-gauge cold rolled steel.

Cover

Snap-on type, fabricated in two sections for 72" and 96" bodies to simplify installation.

Ends

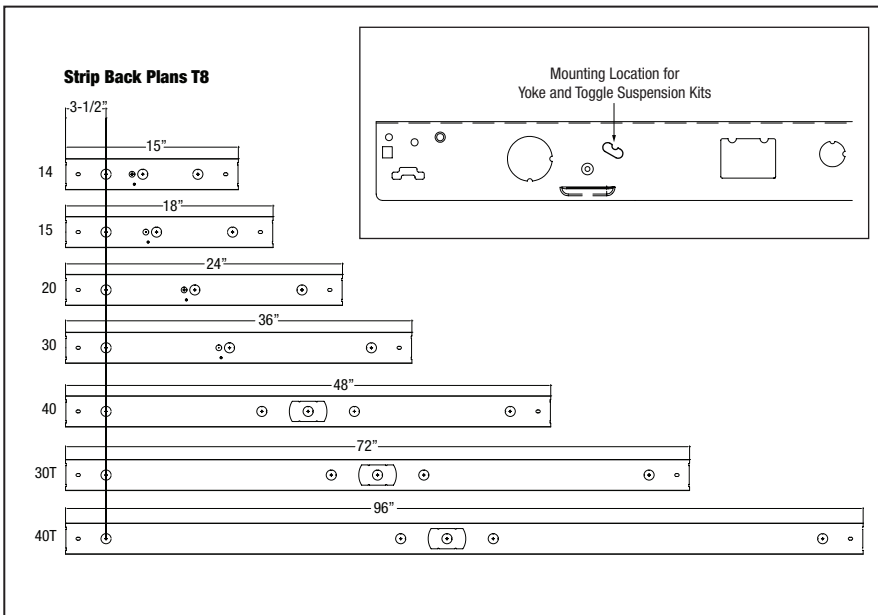
Patented.
Pop-rivet into position.
Accept either slide-on or screw-on sockets.

Finish

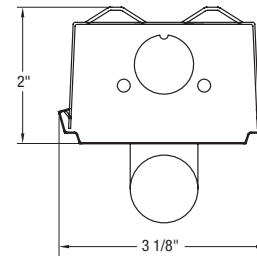
Pre-painted white polyester polymer with minimum 82% reflectivity

Mounting

Surface or pendant mount, individually or in continuous rows. Sufficient knockouts are provided.



KDS Pivot End Knockdown 1-Light



Lampholder Options

Catalog No	Lamps	Lamp Type	Length	Body	Socket Plate (QTY)	Cover (QTY)	End (QTY)
KDS-114PIV-NY	1	T8	15"	KDS-114BPIVNY		KDS-114C (1)	KDSPE (2)
KDS-115PIV-NY	1	T8	18"	KDS-115BPIVNY		KDS-115C (1)	KDSPE (2)
KDS-120PIV-NY	1	T8	24"	KDS-120BPIVNY		KDS-120C (1)	KDSPE (2)
KDS-130PIV-NY	1	T8	36"	KDS-130BPIVNY		KDS-130C (1)	KDSPE (2)
KDS-140PIV-NY	1	T8	48"	KDS-140BPIVNY		KDS-140C (1)	KDSPE (2)
KDS-130TPIV-NY*	2	T8	72"	KDS-130TBPIVNY*	KDSSP (2)	KDS-130C (2)	KDSPE (2)
KDS-140TPIV-NY*	2	T8	96"	KDS-140TBPIVNY*	KDSSP (2)	KDS-140C (2)	KDSPE (2)

*Note: "T" — Tandem option

Optional Suspension Kits		
Part Number	Description	Qty
4011003-KDS-10	Yoke and Toggle Kit	2

	Part Number	Description
	F1232T8-S	T8 rotary snap-in lampholder, rapid start ballast shunted, G13 medium bi-pin
	F1233T8-S	T8 rotary snap-in lampholder, instant start ballast non-shunted, G13 medium bi-pin
	F2010T8-S	T8 rotary snap-in lampholder, rapid start ballast shunted, G13 medium bi-pin
	F2001T8-S	T8 rotary snap-in lampholder, instant start ballast non-shunted, G13 medium bi-pin
	F2021T8-S	T8 rotary snap-in lampholder, rapid start ballast shunted, G13 medium bi-pin
	F2011T8-S	T8 rotary snap-in lampholder, instant start ballast non-shunted, G13 medium bi-pin
	F1501T5-S	T5 rotary snap-in lampholder G5 base, rapid start non shunted

Notice

Dimensions subject to change without notice.

This product is an OEM component kit requiring final assembly by a qualified OEM fixture manufacturer.