



Model 351

General Description

This 16" diameter drop lens produces excellent illumination. The sleek design allows it to look good on its own or apply to 816 or S16 Reflexors®.

Features and Benefits

- Rated up to 250watts
- Available in UV stabilized Acrylic in Lighting or LED Grade Clear, Moon Glow™ (for moderate diffusion), and Lumieo™ (for greater diffusion).
- Also available in Clear Polycarbonate with or without UvaLex® for areas where breakage and high ambient heat are concerns.
- Available in Type II which provides roadway and street lighting and Type V symmetrical lighting.
- This lens produces excellent illumination and uniformity when combined with our Model 816 and S16 Reflexors®.

Applications

Used in medium-bay or low-bay industrial and commercial lighting applications. Compatible with LED modules, compact fluorescent, and vertical burning HID lamp sources.

To avoid detrimental internal reflections and high temperatures inside the drop lens, proper luminaire design is required. Thermal testing should be conducted on each luminaire, with the proposed light source in its selected position to confirm lamp size suitability, or to predict service life of the lens.

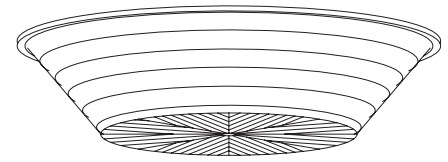
Before final installation, dissipate static on parts by spraying with de-staticized air or by wiping with a clean, damp rag. This will help minimize dust build up.

Service Life

The service life of acrylic refractors is virtually unlimited when used within the recommended temperature limit. Polycarbonate refractors are subject to yellowing especially when used with high ultraviolet output light sources; this effect is enhanced at high temperatures.

Ordering Information

Please call 877-257-5841 for pricing and delivery.



Dimensions

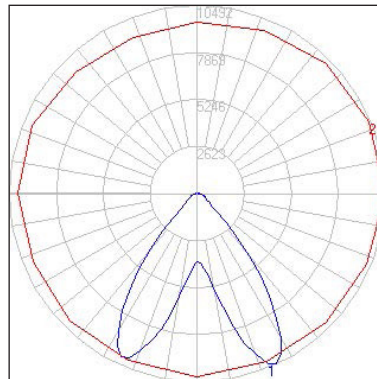
15.9" diameter
3.50" depth

Materials

Acrylic:
Clear
Moon Glow™
Lumieo™
Polycarbonate with or without UvaLex®:
Clear

Fixture Performance for Reference Only

Issue Date: 8/4/16
Prepared For: A.L.P. LexaLite® Brand
Catalog Number: 351 Clear Dome Lens
Lamp: Cree LED board of 68 LEDs
Mounting: Pendant
Driver Type: INVENTRONICS EUD-200S070DT
Watts: 157.45
Luminous Efficacy: 94.45



Lumen Summary

Zone	Lumens	Fixture
0-30	7243.57	48.71
0-40	11549.90	77.67
0-60	13745.28	92.43
0-90	14574.46	98.01
90-110	185.91	1.25
90-130	254.91	1.71
90-150	281.94	1.90
90-180	296.07	1.99
0-180	14870.53	100

Materials

See the LexaLite® brand price list for current part numbers and material offerings. Up-to-date and detailed material specifications can be found in the Resources section on our website www.alpadvantage.com.

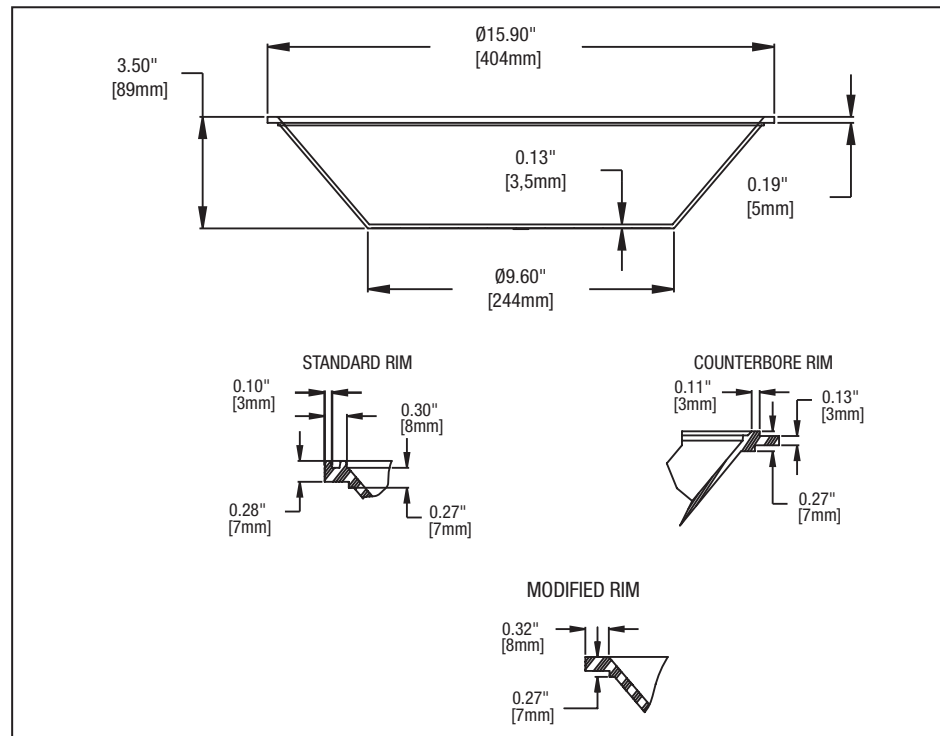
When using acrylic, the surface temperature of the lens should not exceed 80°C. When using polycarbonate, the surface temperature of the lens should not exceed 90°C.

UvaLex® is LexaLite's proprietary treatment to retard yellowing in ultraviolet environments and is standard on these polycarbonate refractors.

Notice

A.L.P. assumes no responsibility for suitability of these materials in any luminaire or application. Please test for fit and function prior to ordering project quantities.

While A.L.P. utilizes IESNA testing procedures and believes our testing results to be accurate, A.L.P. provides photometry for reference only. Actual results will vary based on the actual light source(s) and power source(s) used, i.e. ballast, driver generator, etc. and the combinations in which they are used, as well as operating temperatures, and other electrical and environmental variables. We urge that customers perform their own fixture qualifications prior to making performance based claims. In no event will A.L.P. be liable for any loss, damage, including without limitation, indirect or consequential loss or damage in connection with the use of this information.



This drawing is for reference only. Actual part dimensions will vary. Customer is urged to review actual samples to confirm fit and function. All specifications and dimensions are subject to change without notice.